

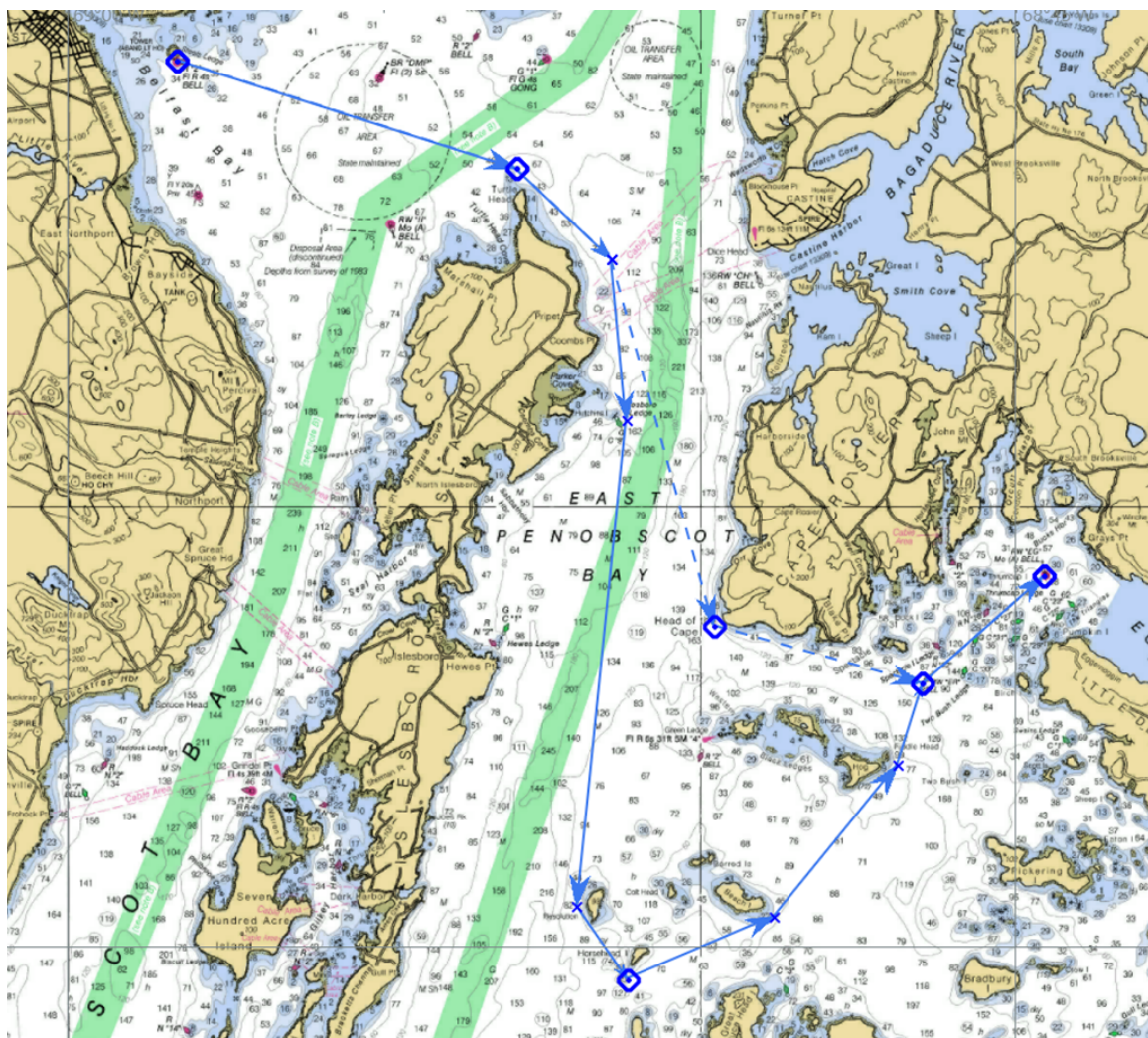
## 2025 Corinthians Annual Cruise Race List

### Race 1 (8/1/2025) – Belfast to Buck's Harbor

1. Start at Steels Ledge bell 'R2' – leave to port [44° 25.1' N / 068° 58.3' W]
2. Leave Isleboro Island (Turtle Head) to starboard [44° 23.8' N / 068° 52.9' W]
3. Leave Isleboro Ledge can 'G9' to starboard [44° 21.0' N / 068° 51.2' W]
4. Leave Horsehead Island to port [44° 14.6' N / 068° 51.2' W]
5. Leave Eggmoggin Reach bell 'ER' to starboard [44° 18.0' N / 068° 46.5' W]
6. Finish at Eggmoggin Reach bell 'EG' – leave to starboard [44° 19.2' N / 068° 44.6' W]

Approximate distance: 20.7 Nmi

*Can shorten course by eliminating marks 3 & 4, leaving #5 (bell 'ER') to port – shortened distance: ~14.1 Nmi*

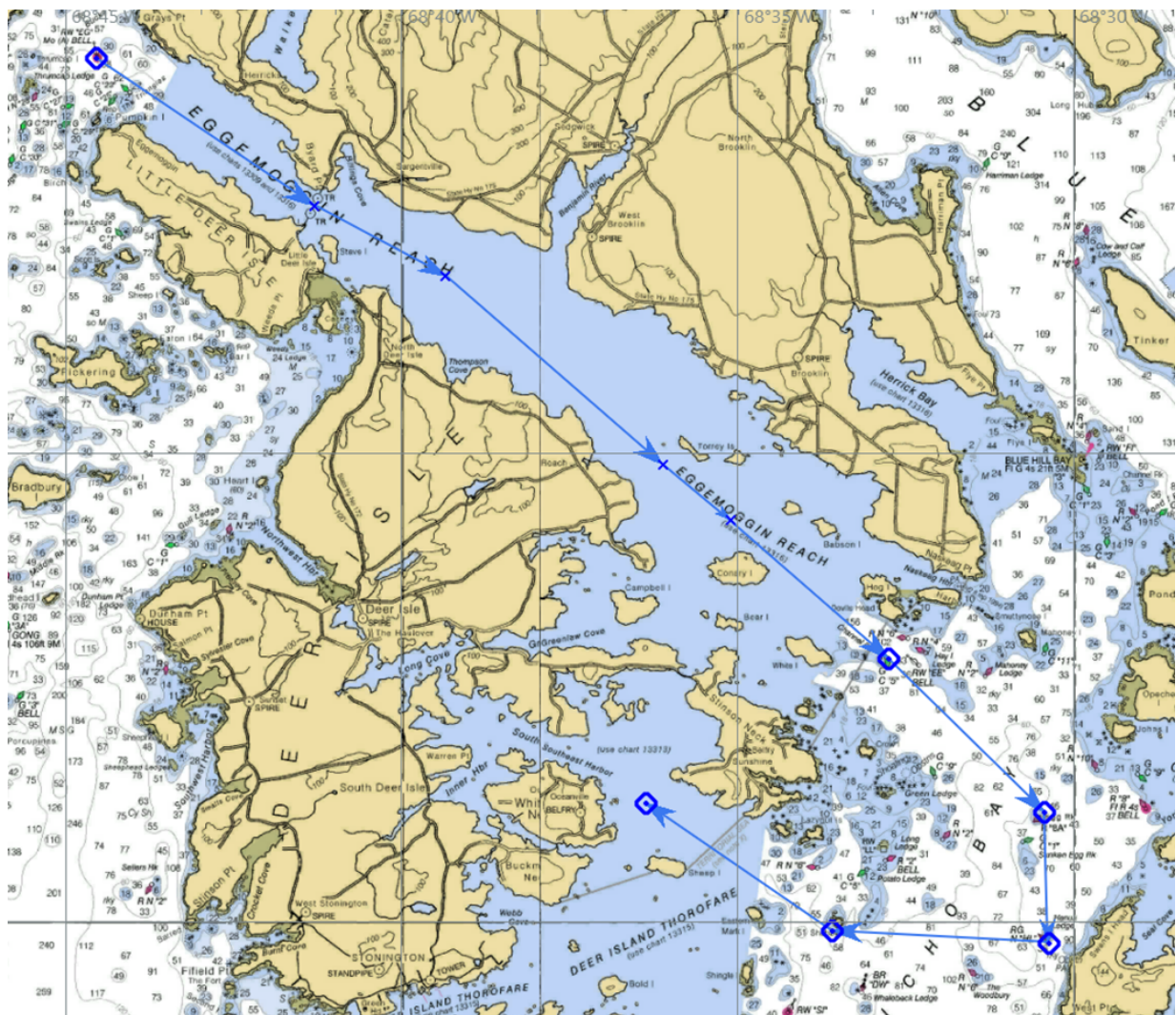


## Race 2 (8/2/2025) – Buck’s Harbor to Billing’s Cove

1. Start at Eggmoggin Reach bell ‘EG’ – leave to port [44° 19.2' N / 068° 44.6' W]
2. Leave Channel Rock ‘G5’ to starboard [44° 12.8' N / 068° 32.8' W]
3. Leave Egg Rock to starboard [44° 11.2' N / 068° 30.5' W]
4. Leave Hanus Ledge ‘HL’ to starboard [44° 09.8' N / 068° 30.4' W]
5. Leave Shabby Island to starboard [44° 09.9' N / 068° 33.6' W]
6. Finish at Whaleback Ledge ‘G1’ – leave to port [44° 11.3' N / 068° 36.4' W]

Approximate distance: 19.1 Nmi

*Can shorten course by moving start down Eggmoggin Reach using any one of the channel buoys for a starting mark. Possible race distances 10.7 – 16.3 Nmi.*

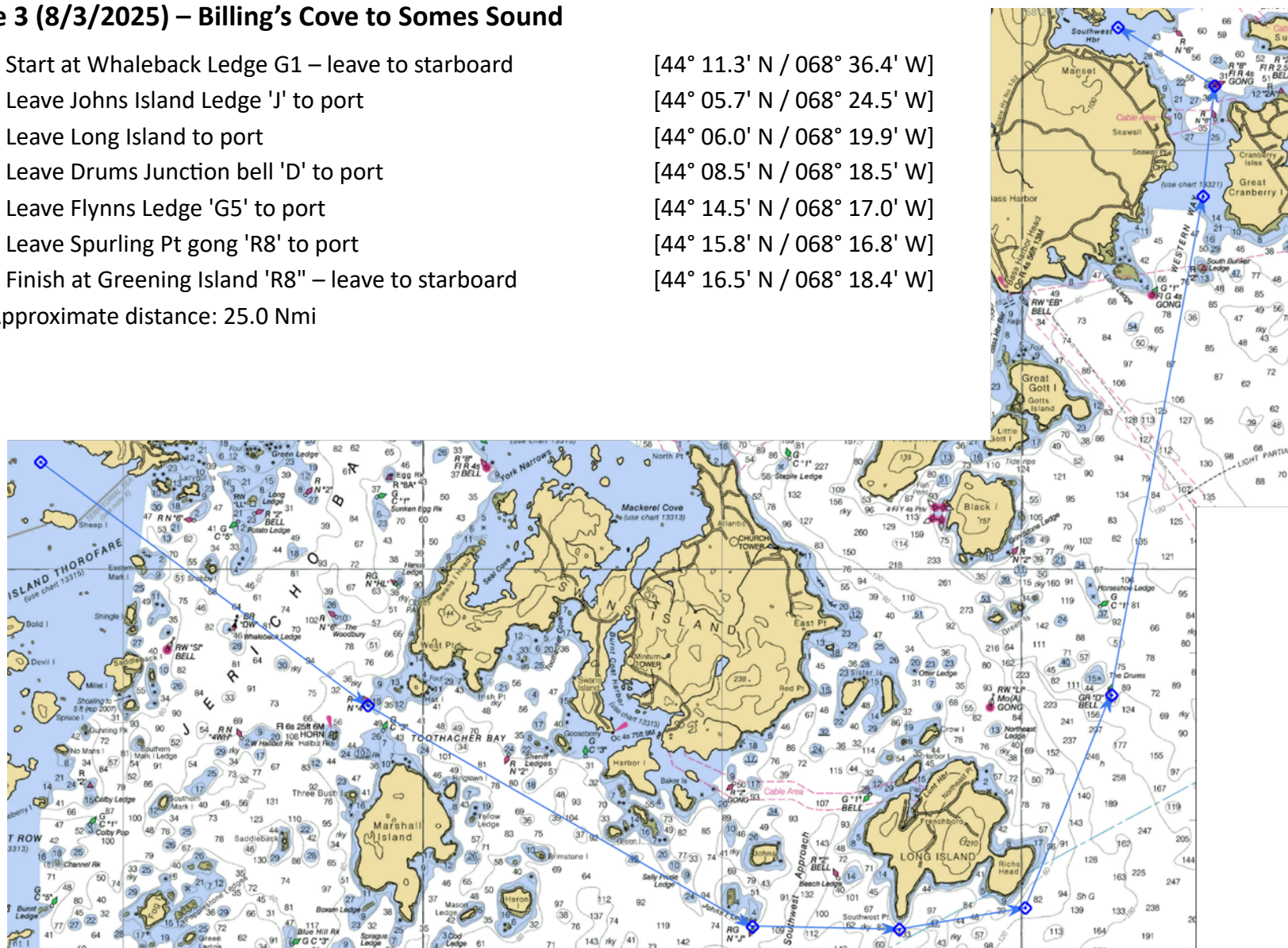




## Race 3 (8/3/2025) – Billing's Cove to Somes Sound

1. Start at Whaleback Ledge G1 – leave to starboard [44° 11.3' N / 068° 36.4' W]
2. Leave Johns Island Ledge 'J' to port [44° 05.7' N / 068° 24.5' W]
3. Leave Long Island to port [44° 06.0' N / 068° 19.9' W]
4. Leave Drums Junction bell 'D' to port [44° 08.5' N / 068° 18.5' W]
5. Leave Flynns Ledge 'G5' to port [44° 14.5' N / 068° 17.0' W]
6. Leave Spurling Pt gong 'R8' to port [44° 15.8' N / 068° 16.8' W]
7. Finish at Greening Island 'R8' – leave to starboard [44° 16.5' N / 068° 18.4' W]

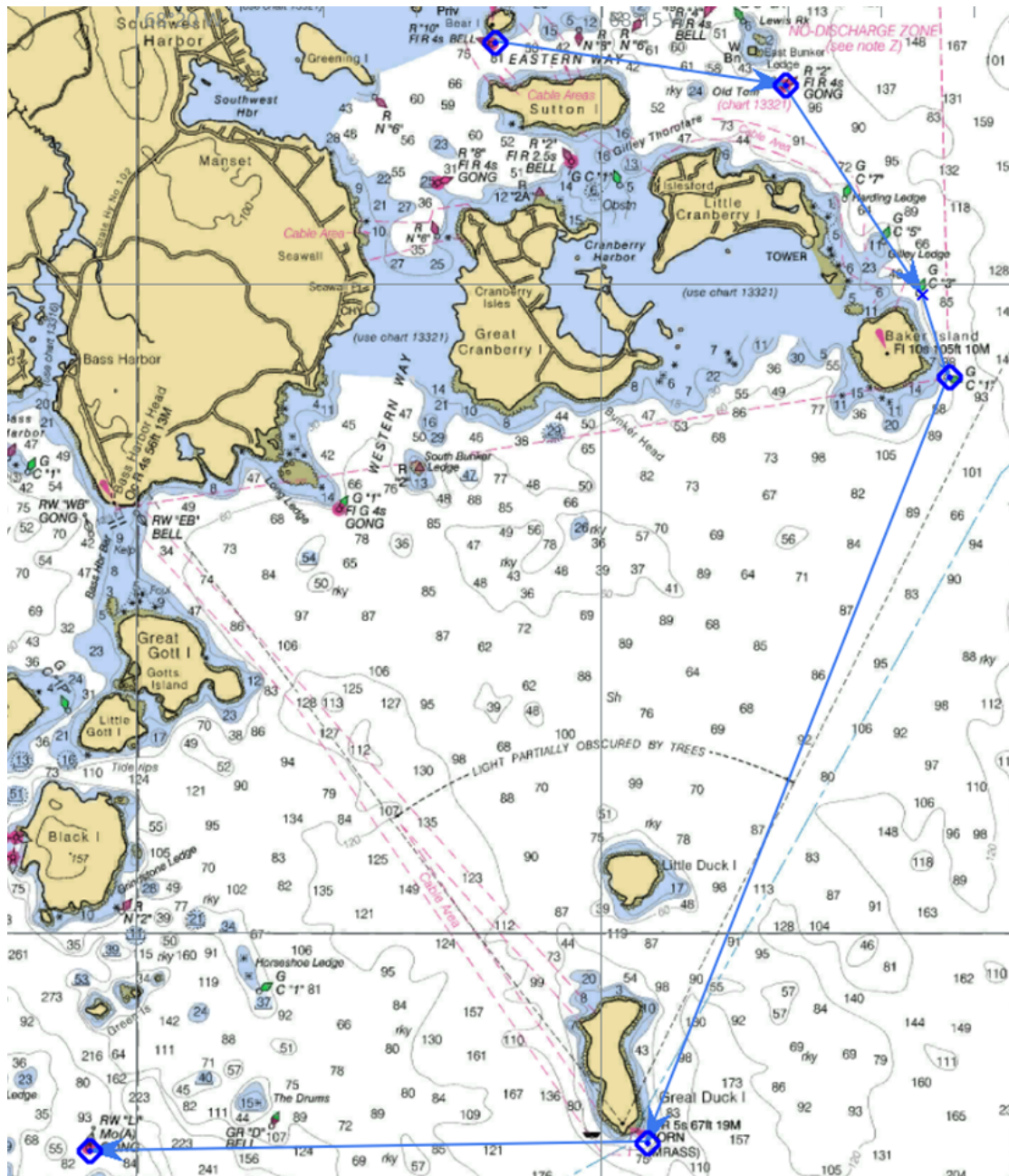
Approximate distance: 25.0 Nmi



## Race 4 (8/5/2025) – Somes Sound to Swan Island

1. Start at Bear Island bell 'R10' – leave to starboard [44° 16.9' N / 068° 16.2' W]
2. Leave Baker Isl 'G1' to starboard [44° 14.3' N / 068° 11.3' W]
3. Leave Great Duck Island to starboard [44° 08.4' N / 068° 14.5' W]
4. Finish at Long Island gong 'LI' – leave to starboard [44° 08.3' N / 068° 20.5' W]

Approximate distance: 15.5 Nmi

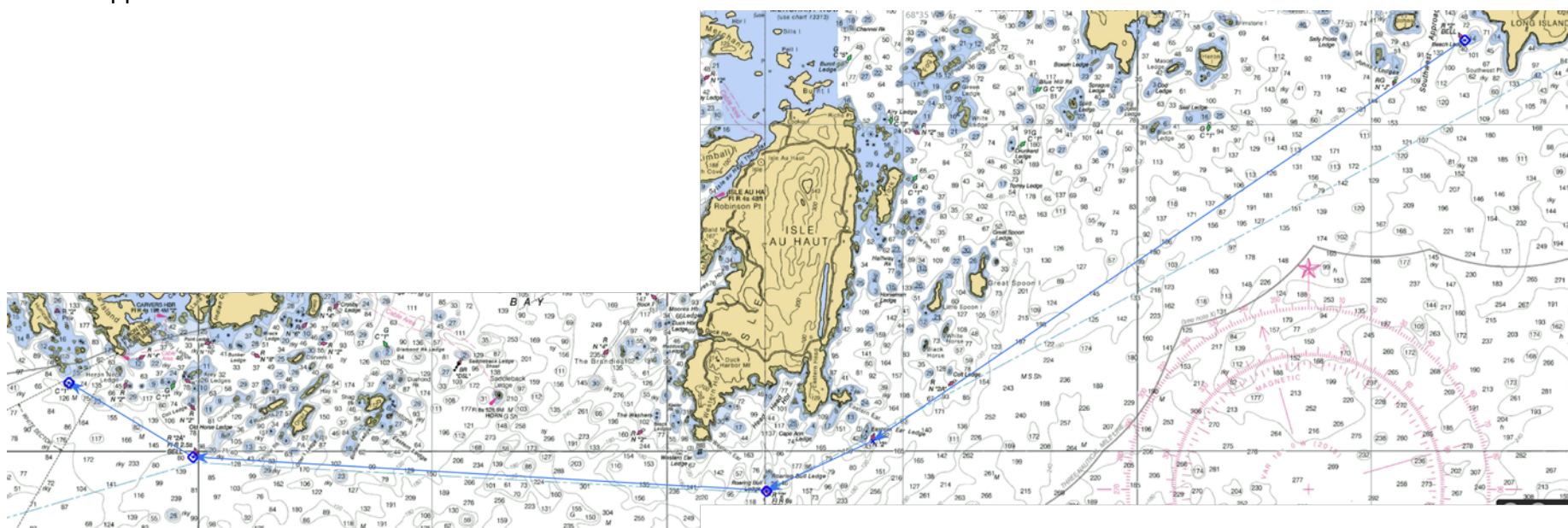




## Race 5 (8/6/2025) – Swan Island to Vinalhaven

1. Start at Beach Ledge bell 'R2' – leave to starboard [44° 06.3' N / 068° 23.0' W]
2. Leave Roaring Bull bell 'R2' to starboard [43° 59.4' N / 068° 37.9' W]
3. Leave Old Horse Ledge bell 'R2A' to starboard [43° 59.9' N / 068° 50.1' W]
4. End at James & Willies Ledge 'G1' – leave to starboard [44° 01.1' N / 068° 52.8' W]

Approximate distance: 23.8 Nmi



## Race 6 (8/7/2025) – Vinalhaven to Camden

1. Start at Fox Island bell 'FT' – leave to starboard [44° 05.3' N / 068° 57.3' W]
2. Leave W. Penebscot gong 'RB' to starboard [44° 05.9' N / 069° 00.2' W]
3. Leave Linconville bell 'G7' to port [44° 16.7' N / 068° 59.7' W]
4. End at Camden Harbor Ent 'R2' – leave to starboard [44° 12.0' N / 069° 02.4' W]

Approximate distance: 18.1 Nmi

