



The Corinthians Annual Cruise 2025

Maine: The Penobscot and Acadia



31 July to 9 August 2025

Welcome Corinthians and Guests to the 2025 Annual Cruise

The cruise committee, under the leadership of Bill Burnham, John Geissinger and Joe Rocchio, has put together an excellent itinerary for the cruise to Maine's Midcoast. The Annual Cruise is an opportunity for old friends to get together and to make new friends. I encourage everyone to reach out and get to know people you are meeting for the first time.

I especially welcome those who are participating in the Annual Cruise for the first time. Diane and I will have you aboard Owl Moon for the traditional Master's cocktail party for first timers. Look for it in the schedule of events.

First timers may not be familiar with the tradition of racing we have on the Annual Cruise. I think a better term for it is "fast cruising." We are all going to the same destination, so why not try to get there as quickly as possible. With a few simple rules, we make racing safe and fun for all, so please consider joining in on the friendly competition. I know you are going to compare your performance to other boats anyway.

Here's to a week filled with sailing, socializing, and making lasting memories.

Enjoy!
John Butler

Important Note

This printed version of the Cruise Guide reflects status as of 23 July 2025.

Cruise Guide Website: corinthianscruise.org is updated daily.

Cruise Participants should check the Cruise Guide Website regularly for updates: [corinthianscruise.org/Breaking News/](http://corinthianscruise.org/Breaking%20News/)

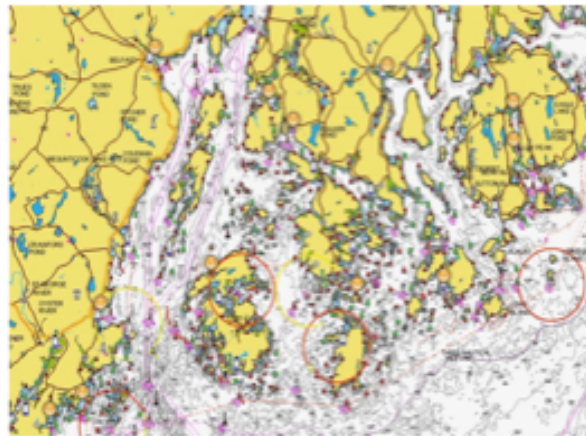
Additional updates will be given at the Morning Announcements on VHF



The Corinthians Penobscot – Acadia Annual Cruise

31 July to 9 August, 2025

Come join your Corinthians friends and explore mid-coast Maine!



- The Cruise embarks in Belfast Maine on 31 July 2025 with a Cruise Launch Registration, Cocktail Hour, and Lobster Dinner at the Belfast Boathouse.
- The Cruise Finale will be at Camden Maine on 9 August 2025 with a Cocktail Hour, Dinner, and Awards Presentation at the Camden Yacht Club.
- In the interim we will cruise through a series of ports and anchorages which offer exploration, activities ashore, and/or inter-vessel social activities in the anchorages -- a Maine Experience.
- A lay day in Somes sound will give cruisers access to Bar Harbor and Acadia Park
- On 6 August Cruisers will be able to enjoy the Sweet Chariot Music Festival on Swans Island.
- On 8 August participant can enjoy Shakespeare In the Park – Two Gentlemen of Verona, at the Camden Amphitheater.
- Details of the Cruise are outlined in the on-line Cruise Guide on the Cruise Website.
- The Cruise Website, corinthianscruise.org, is a living document that will provide up-to-date information as planning continues to mature. Check regularly for updates.
- Note: intervening Ports of Call may undergo some changes as the Cruise Committee wrestles with the organizing logistics of moving a large fleet along a reasonable course while accommodating a lot of other variables (events, facilities, other fleets, geography, etc.)
- A Feeder Cruise to the Penobscot sponsored by the New England Fleet will take place on 29 – 30 July 2025. It will start in Boothbay Harbor on 29 July with a social gathering at the Boothbay Harbor Yacht Club. There will be an intermediate stop in Tenants Harbor or Rockland on 30 July moving on to Belfast for 31 July.
- Post-Cruise meanderings are also planned.

corinthianscruise.org,

About the Cruise Guide

This year's Cruise Guide is a bit of departure from the past — a reflection of how technology has greatly affected the art of sailing, cruising, and "going down east to Maine!" First there is GPS geolocation, with digital electronic navigation chart and the many types of devices (chart plotters, tablet computers, smart phones) that put the most current and accurate data at the captain's fingertips. Add in digital quantum radar overlays on the navigation charts and it is really a whole new world — from even a decade ago. Add in Starlink and it is truly a wealth of knowledge and power at one's command that enables greater safety, ability to explore, and be the modern Magellan, Columbus, Cook, etc. on one's own ship.

Gone is the magic that occurred when navigating by dead reckoning in the dark or with limited visibility and the critical mark sought suddenly appears — sometimes almost exactly where it should have been.

Reduced but not gone is the mystery and adventure of exploring a new passage, coastline or harbor by following the visual cues (when the fog allowed you to see them). Wonder, magic, beauty combined with occasional heart-stopping surprises.

Today's captain has no excuse for not being in the know and navigating and exploring from the vast array of accurate information that can be called to one's view and fingertips.

All this means the long descriptive narratives from past guides have been overcome by ENC (electronic navigation charts) and communications technology. Thus, as the Annual Cruise Fleet wends its way across the Penobscot and back, the general pathway is provided. Then it is up to the Captain and crew to exploit the navigation technology that should be aboard. Another aspect is that much of the narrative description of logistics, meals, drinks, vessel management have been replaced with a series of information tables on the various topics. These can be searched, sorted and printed.

Cheers, Joe Rocchio, Dogsbody and FUGAMA

General Information

Registration

Registration will be on Thursday, July 31, at 1600 hrs at the Boat House in Belfast.

Navigation and Safety

Navigational advice has been provided in the Cruise Book for Ports of Call for general purposes only. However, navigation shall remain in all cases the ultimate and individual responsibility of the skipper. The safety of each vessel at sea or in port is the sole and full-time responsibility of the skipper. At no time shall the skipper assume that anyone else has done or will do the navigation for him or her.

Skipper's Meeting

A Skipper's Meeting will be held at 1700 hrs on Thursday, July 31, just prior to the opening dinner. Skipper's only, please.

Name Tags

It is expected that Corinthian Members are to bring their name tags; Corinthians' guests will be given theirs by the Cruise Committee at registration.

Event Tickets

At Registration, Swans Island Chanty and Camden Shakespeare tickets will be handed out.

Fleet Communications

All VHF announcements by the Cruise and Race Committees shall be made on VHF Ch. 68. Individual boats should also monitor and use this channel for contact with other fleet boats, but please switch to another channel after making contact. See cruise attendee list for cell phone and MMSI numbers for alternative communication. Daily radio announcements shall be made by the Cruise and Race Committees beginning at 0815 on Ch. 68 after morning colors.

Emergency Services

The U.S. Coast Guard monitors VHF Ch. 16 for emergencies. Skippers are encouraged to monitor VHF Ch. 16 while underway.

Our Cruise Medical Officer is Richard Young (cell: 401-439-1082) aboard *Tango*.

Daily Routine

0800: Colors

0815: Radio announcements and Racing Results. All times for planned activities are subject to change at the discretion of the Cruise Chair, in conjunction with the Port Captains and Race Committee, and may be announced at any time of VHF Ch. 68 while in port. Please share news or announcements with your fellow Corinthians.

Harbor Starts

The Corinthian's tradition has been to leave a Port of Call in parade fashion, led by either the Master, Past Master or the Cruise Committee Chairman whose boat will be flying a large Corinthian flag, in which is referred to as a Harbor Start. Harbor Starts and times will be announced during morning radio announcements.

Rafting

Rafting is permitted wherever allowed by local authorities. When rafting, the boat approaching traditionally provides the lines and fenders. The boat to which one rafts must make an offer to raft to the rafting vessel. Do not assume.

Flag Etiquette

Colors are at 0800 at which time the Ensign will be displayed. Colors are to be struck at sunset each evening. Etiquette is to fly the Corinthians flag from the truck or starboard spreader of the foremost mast of sailing vessels, and from either the truck or bow staff of power boats. Do not fly the flag beneath a radar reflector as that can be mistaken for a distress signal. Flag police have been known to attend Corinthian cruises, and any penalty shall be appropriately strict. For the Cruise, it is permitted to fly your Ensign while racing.

Dress Ship

Dress Ship shall occur, weather permitting, on the Lay Day in Somes Sound and Swans Island. The traditional sequence of alternating letter flags and number pennants is as follow: Starting from forward, AB2, UJ1, KE3, GH6, IV5, FL4, DM7, PO Third Repeater, RN First Repeater, ST Zero, C X 9, WQ8, ZYZ Second Repeater. Ensigns, burgees, private signals and flag officer flags shall not be included among the hoist of code flags and pennants but shall be flown as provided by etiquette.

First Timers and Guests

The Corinthians have a time-honored tradition of welcoming new cruisers. Please do not hesitate to introduce yourselves, join a raft or ask a question. First Timer's reception will be held

Dress attire for Onshore Activities

Opening Dinner: Smart Cruising Casual

Final Dinner: Sport Coat and Tie/Cocktail Attire

All Other Ports: As You Are

No Discharge Zones

Rockland and Boothbay Harbor are No Discharge Areas (NDA). In an NDA, treated and untreated discharges from marine toilets are prohibited.

To ensure compliance, boaters must modify their heads to prevent discharge.

Boaters with a Type I or II marine sanitation device (MSD) must disable same:

- Close the seacock (or Y-valve) and remove the handle.
- Fix the seacock in a closed position with a padlock on non-releasable wire tie.

Boaters with a Type III MSD (holding tank) must:

- Direct all sewage to the holding tank for later disposal at a pump out station or by a pump out boat.
- Close and lock each valve leading to an overboard discharge with a padlock or non-releasable wire tie.
-

Trash

Please follow appropriate trash disposal requirements and utilize trash containers onshore. Thank you for keeping Maine and its waters clean!

The Nothing Award

At the closing dinner of The Corinthians' annual cruise, the Nothing Award is bestowed upon the skipper who has, while on the cruise, performed some observable and notable malfeasance of seamanship or navigation about which it is best to remember nothing. The award itself is a large, ungainly and heavy broken-down ship's searchlight.

The Something Award or Annual Cruise Award of Merit

This award is not to forget those who reached out and helped their fellow sailors in times of need. The award, first given in 2022, was conceived to balance recognition of malfeasance with acknowledging those who offered aid, kindness and altruism. The award is a shadowbox displaying a piece of driftwood etched with The Corinthians iconic “Old Salt” sitting on a piling.

The Race Cruise Dinghy Race Trophy

The Race Cruise Dinghy Race Trophy is a mahogany sailboard rudder suitably finished and emblazoned with the Corinthian flag. First awarded in 1996, it is presented to the overall winner of the dinghy races held during the annual Corinthian cruise.

Listen to morning announcements for rules. ?????? is our planned venue for the Dinghy Race Trophy.

The Salty Pot Award

The Salty Pot Award is a chef’s pot and is awarded for the best “offshore” recipe. A winning recipe is one which yields excellent results and is judged to be relatively easy to prepare in the galley while at sea in what could be described as adverse conditions.

The contest is scheduled for the Abel’s Boatyard shed. Listen to the morning announcements for additional information.

WHO'S WHO

John Butler	Master
Bill Burnham	Cruise Chairman; Go To for Unspecified Port Captains
John Geissingner	Cruise Committee; Port Captain, Swans Island
Joe Rocchio	Cruise Committee; Dogsboddy; FUGAMA-Port Captain, Camden
Alice-Neily Mutch	Cruise Committee Port Captain, Boothbay Harbor, Belfast
Peter Clerkin	Cruise Communications Maven
Rich Bowers	Paymaster
Chris Rogers	Race Chairman
Tom Stoner	Race Designer

1. FOG, ANCHORING AND LOBSTER POTS

These pieces were written many years ago for prior Corinthian cruises to Maine by Past Master Dick Woods. Dick's many years of sailing and boating experience has provided basic techniques in piloting and anchoring which are time-proven and valuable to this day. They are not theories, but practical skills, written in response to real problems experienced by many of our cruisers in the past. Dick's course syllabus has been adopted by several United States Power Squadrons for boaters to earn their State's boating license.

General Conditions and Fog

In the words of Dick, he hesitates to comment on the typical sailing conditions for fear of angering the weather gods, but he pushes on, nevertheless. If the weather does indeed turn foul, we all will make the most of it and hopefully not be deterred from sailing Down East again.

The winds on a typical summer day begin light and build during the day to a peak of 15-20 knots from the SW in the afternoon and then die as nightfall approaches. The wind pattern is very similar to what we find in either Narragansett Bay or Buzzards Bay. The major difference is the water is still cold; it doesn't hurt to have a wetsuit on board-and fog can develop at any time. However, there are some conditions that increase the odds of encountering fog. Those are:

- Dew points higher than water temperature
- Air warmer than water
- Low cumulus clouds
- Fog the day prior
- Watery Sun
- Poorly defined horizon
- Fog bank upwind
- Steady onshore wind
- Hazy white sky
- Damp feeling

Fog Piloting

- Lay-off courses well clear of all dangers;
- Lay courses to marks with sounds
- Keep precise DR and current diagrams.
- Reset trip log at each fix.
-

When plotting from doubtful positions, assume you are closer to danger than reckoning shows. Modern electronics are wonderful, but they have a habit of going haywire at the time they are most needed!

On hearing fog signals, note bearing and type of vessel:

- Power -1 long blast per 2 minutes
- Sail -1 long blast and 2 short per 2 minutes
- Anchored -Bell for 5 seconds each minute
- Towing -1 long blast and 2 short per 2 minutes
- Towed -1 long blast and 3 short per 2 minutes

Note: "long" = 4-6 seconds, "short" = 1 second

Answer every blast. If signal appears close forward ahead, bring your vessel to bear on port bow. If louder with no change in bearing, bring it on beam and go ahead on new course until is on the quarter. Only then bring it on beam and keep it on beam by changing course until clear.

If position relative to land or danger prevents avoidance maneuvers, stop and give stop signal (2 long blasts per 2 minutes). If collision danger, show strobe, white flare, etc.

Fog Orders

- Skipper to deck
- Fix to chart
- Update DR track-current diagram
- Radar reflector up
- Running lights on
- Life jackets on
- Silence on deck
- Listen.

Sound Fog Signals

- | | |
|-----------------------------------|---------|
| • 1 long blast every 2 minutes | -power |
| • 1 long, 2 short every 2 minutes | -sail |
| • Bell every minute | -anchor |

Thoughts on Anchoring and Rafting

The 2025 Corinthian Cruise is going to involve more anchor handling and rafting than most. The Cruise Committee has asked for a few observations on the skills and courtesies of these two arts.

First, anchoring. When you look to pick your spot in a harbor at high tide and see a peaceful spot in the anchorage devoid of boats, there is probably a good reason! Watch your charts. Entering at low tide is easier because the hazards can usually be seen. In addition, be sure your anchor is well set; some areas may have kelp beds.

We all know the importance of scope, that it should be measured from deck height and should presume water depth at high tide. Due to the crowd of boats in some anchorages, we may be tempted to use less scope than the usual 7 foot length to 1 foot depth ratio in order to reduce swing room. If you do, at least set your anchor on a long scope before you shorten up, and be especially sure to use an appropriate anchor for the bottom. An all-chain rode, or at least a long piece of it in front of the nylon line, is a help here. The traditional “kellet”, a weight sent down the rode on a messenger line, can also be helpful in improving the holding power of a shorter rode.

If you are anchored first, you have the right to tell a newly arrived boat if you feel it is anchoring too close, over your anchor, or within your swinging circle (especially if your scopes are different lengths, chain versus rope, two anchors versus one, kelleet vs plain rode, etc.). The recent arrival has a duty to respond immediately.

Rafting is, like anchoring, a highly judgmental art, and only a fool would attempt to treat it with a few cursory remarks. So, here goes....

Be reluctant to raft at night, even in calm weather. If you choose to raft through the night, be prepared to break off quickly at the request of the anchored boat. Prepare yourself to put out an anchor or two, pre-plot the way to clear water and enter waypoints into your GPS. Raft only with someone in whom you have confidence, both as to anchoring skill and as to seaman's judgement. Need it even be mentioned that the larger boat should be the anchored boat, that the gear should be the heaviest available, and that the weather be benign? Sometimes an anchored boat will put out fenders as an invitation to raft alongside, but the approaching boat has the responsibility to ask permission, determine desired side, rig all necessary lines and fenders before starting the approach. The approach must be made deliberately, timed to the swing of the anchored boat, from a shallow angle off the quarter. The approaching boat must NEVER carry its way across the bow of the anchored boat. As in docking, a bad angle is less of a sin than momentum at the wrong time so don't try to use late power to fix a bad angle.

As a matter of traditional courtesy, avoid walking through the cockpit of a boat rafted alongside another boat unless you're specifically invited. Cross on deck ahead of the mast.

Sailboats rafted together should stagger their masts so rigs won't clash if boats roll. And boats of different sizes and shapes should be careful lest a higher toe rail rolls down and hits a lower stanchion, rail, etc. In breaking a raft, especially in the dark or a breeze, check for lines in the water before going into gear.

Lobster Pots

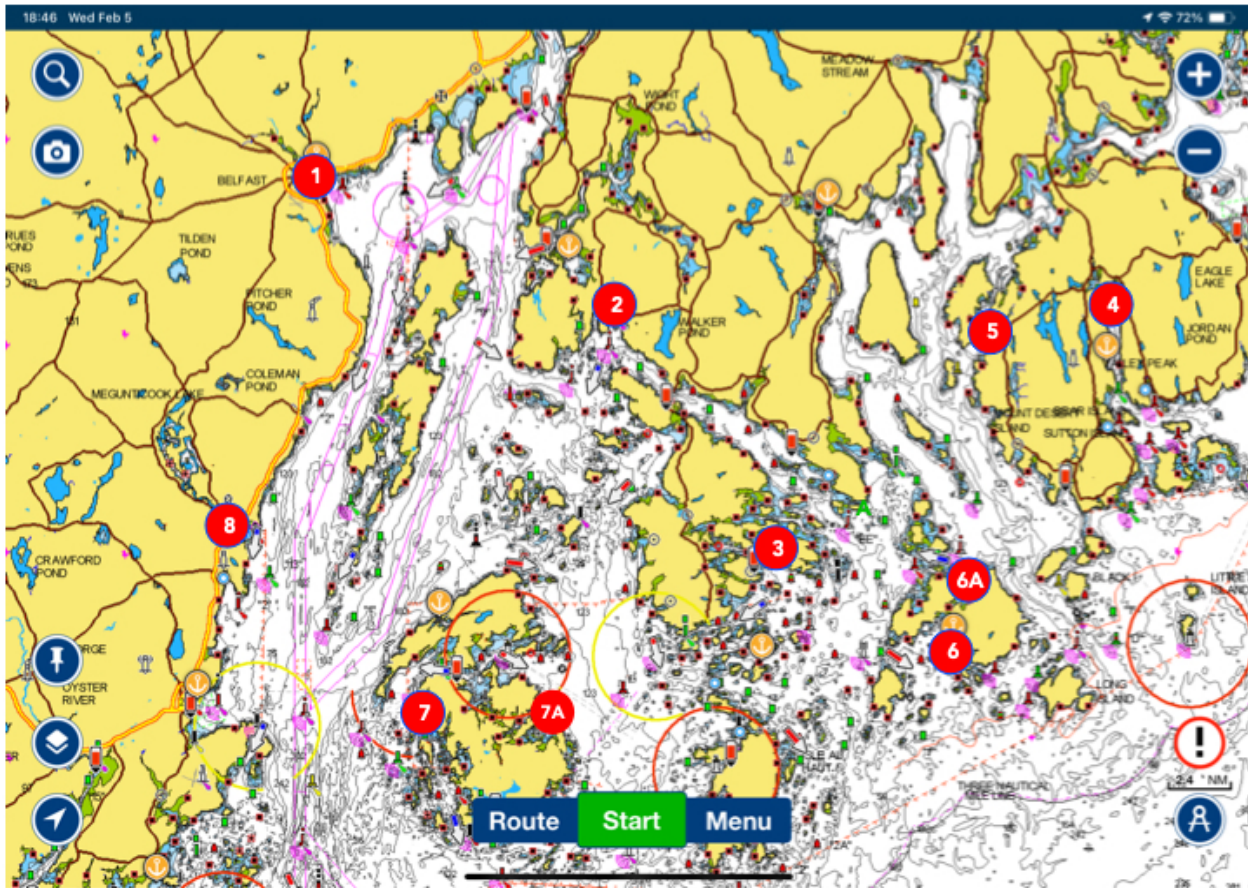
Each of the lobster buoys is attached by a long length of line to one or more traps. The buoys are often attached by a length of line to another float, called a toggle, whose purpose is to keep the line off the bottom at low tide. These toggles can be difficult to see but try not to sail between the buoy and the toggle; you run the risk of becoming snagged. If indeed you do wrap a prop, try to avoid cutting the line, and if you do, tie the two ends together so the lobsterman does not lose valuable traps and gear.

Where we see lobster pots, be constantly vigilant. You will learn their array on the surface and become a pro navigating around them; and...they are great tools to help you judge the current!

Cruise Itinerary At A Glance

Date	Day	Port of Call	Activity	Race Start	Distance to Next Port	Poohbahs
29-Jul-25	Tuesday	Boothbay Harbor	Feeder Cruise Start; Day 1		26	Alice Mutch, John Geissinger
30-Jul-25	Wednesday	Tenants Harbor	Feeder Cruise Day 2		18	No Port Captain
31-Jul-25	Thursday	Belfast	Cruise Launch: Registration & Dinner @ Belfast City Boathouse		17	Alice Mutch
1-Aug-25	Friday	Bucks Harbor	Morning walking tour of historic Belfast; Explore Bucks Harbor; Floating cocktail hour	1300	18	Bill Burnham, Sally Stone
2-Aug-25	Saturday	Billings Cove, E Deer I, N Eaton Pt	Fun and Games in the harbor		18	John Butler
3-Aug-25	Sunday	Somes Sound; Able's Boat Yard	BBQ Dinner by Big Cat's Catering		23	Bill Burnham, Ned Butler
4-Aug-25	Monday	Somes Sound; Able's Boat Yard	Free-play: Explore Mt Desert Island and Acadia National Park; Salty Pot, Cocktail Hour		0	Bill Burnham, Ned Butler
5-Aug-25	Tuesday	Pretty Marsh Harbor	Dinghy Race in the Harbor		11	John Geissinger
6-Aug-25	Wednesday	Burnt Coat Harbor, Swans Island	Sweet Chariot Music Festival; Hiking; Lighthouse Visit		29	John Geissinger
7-Aug-25	Thursday	Seal Bay, Vinalhaven	Dinghy Race, if rescheduled		10	Bill Burnham
8-Aug-25	Friday	Camden	Explore Town; Attend Shakespeare in the Park		0	Joe Rocchio
9-Aug-25	Saturday	Camden	Explore Town; Cruise Finale at Camden Yacht Club		0	Joe Rocchio

Itinerary Chart At a Glance



1	Belfast
2	Bucks Harbor
3	Billings Cove / Deer Island SE
4	Somes Sound
5	Pretty Marsh Harbor
6	Burnt Coat Harbor, Swans Island
6A	Mackerel Cove, N Swans Island, (Alternative anchorage for Festival)
7	Long Cove, Hurricane Sound, Vinalhaven Island-Alternate
7A	Seal Harbor, Vinalhaven Island
8	Camden

Ports of Call Latitude & Longitude

Belfast	44° 24.94 N
Billings Cove, E Deer I, N Eaton Pt or SW Harbor, E-Ctr Deer I	44° 11.96 N
Boothbay Harbor	43° 50.31 N
Bucks Harbor	44° 19.89 N
Burnt Coat Harbor, Swans Island	44° 07.98 N
Camden	44° 12.15 N
Long Cove, Hurricane Sound, Vinalhaven I	44° 5.323 N
Mackerel Cove, N Swans Island	44° 10.74 N
Merchants Row	44° 07.11 N
NE Harbor, MDI	44° 17.1' 4 N
Pretty Marsh Harbor, NW MDI	44° 19.90 N
Rockland	44° 05.94 N
Seal Bay, E Vinalhaven I	44° 05.77 N
Somes Sound, MDI	44° 21.26N
SW Harbor, MDI	44° 16.39 N
Tenants Harbor	43° 57.90 N
Winter Harbor, E Vinalhaven I	44° 06.03 N

Itinerary at a Glance

1	31-Jul-15	Thursday	1200	1600	Belfast City Boathouse	Registration	--
1	31-Jul-15	Thursday	1600	1700	Belfast City Boathouse	Cocktail Hour	--
1	31-Jul-15	Thursday	1800	1800	Belfast City Boathouse	Shore Dinner	--
1	31-Jul-15	Thursday	2100	2100	Belfast City Boathouse	Wrap up	--
Day	Date	Weekday	Start Time	End Time	Location	Activity	Comment
2	1-Aug-25	Friday	0800	0805	Belfast	Colors	--
2	1-Aug-25	Friday	0810	0830	Belfast	Announcements	--
2	1-Aug-25	Friday	0900	1130	Belfast	Walking tour of historic Belfast	
2	1-Aug-25	Friday	1200	1115	Belfast	Harbor Start	--
2	1-Aug-25	Friday	1300	1900	Penobscot	Race Start	--
2	1-Aug-25	Friday	1700	1900	Bucks Harbor	Quaff Around the Harbor	--
2	1-Aug-25	Friday	2000	2000	Bucks Harbor	Evening Colors	
Day	Date	Weekday	Start Time	End Time	Location	Activity	Comment
3	2-Aug-25	Saturday	0800	0805	Bucks Harbor	Colors	--
3	2-Aug-25	Saturday	0810	0830	Bucks Harbor	Announcements	--
3	2-Aug-25	Saturday	1000	1015	Bucks Harbor	Harbor Start	--
3	2-Aug-25	Saturday	1100	1700	Eggemoggin Reach	Race Start	--
3	2-Aug-25	Saturday	1800	1900	Billings Cove	Master's First Timers Fete	--
3	2-Aug-25	Saturday	1900	2100	Billings Cove	Mix, Meet, Dine	

3	2-Aug-25	Saturday	2000	2000	Billings Cove	Evening Colors	
Day	Date	Weekday	Start Time	End Time	Location	Activity	Comment
4	3-Aug-25	Sunday	0800	0805	Billings Cove	Colors	--
4	3-Aug-25	Sunday	0810	0830	Billings Cove	Announcements	--
4	3-Aug-25	Sunday	1000	1015	Billings Cove	Harbor Start	--
4	3-Aug-25	Sunday	1100	1700	Penobscot	Race Start	--
4	3-Aug-25	Sunday	1800	2100	Somes Sound	Catered Dinner	
4	3-Aug-25	Sunday	2000	2000	Somes Sound	Evening Colors	--
Day	Date	Weekday	Start Time	End Time	Location	Activity	Comment
5	4-Aug-25	Monday	0800	0805	Somes Sound	Colors	--
5	4-Aug-25	Monday	0810	0830	Somes Sound	Announcements	--
5	4-Aug-25	Monday	0805	1700	Somes Sound	Free Play	--
5	4-Aug-25	Monday	1700	1900	Somes Sound	Salty Pot Contest	--
5	4-Aug-25	Monday	2000	2000	Somes Sound	Evening Colors	--
Day	Date	Weekday	Start Time	End Time	Location	Activity	Comment
6	5-Aug-25	Tuesday	0800	0805	Somes Sound	Colors	--
6	5-Aug-25	Tuesday	0810	0830	Somes Sound	Announcements	--
6	5-Aug-25	Tuesday	1000	1015	Somes Sound	Harbor Start	--
6	5-Aug-25	Tuesday	1100	1900	Penobscot	Race Start	--
6	5-Aug-25	Tuesday	2000	2000	Pretty Marsh Harbor	Evening Colors	--
Day	Date	Weekday	Start Time	End Time	Location	Activity	Comment

7	6-Aug-25	Wednesday	0800	0805	Pretty Marsh Harbor	Colors	--
7	6-Aug-25	Wednesday	0810	0830	Pretty Marsh Harbor	Announcements	--
7	6-Aug-25	Wednesday	1000	1015	Pretty Marsh Harbor	Harbor Start	--
7	6-Aug-25	Wednesday	1100	1600	Pretty Marsh Harbor	Race Start	--
7	6-Aug-25	Wednesday	-	1530	Burnt Coat Harbor	Fleet should be at anchor	--
7	6-Aug-25	Wednesday	1600	1700	Burnt Coat Harbor	Sea Shanty Serenade	--
7	6-Aug-25	Wednesday	1800	1930	Burnt Coat Harbor	Sweet Charity Music Festival	--
7	6-Aug-25	Wednesday	2000	2000	Burnt Coat Harbor	Evening Colors	--
Day	Date	Weekday	Start Time	End Time	Location	Activity	--
8	7-Aug-25	Thursday	0800	0805	Burnt Coat Harbor	Colors	--
8	7-Aug-25	Thursday	0810	0830	Burnt Coat Harbor	Announcements	--
8	7-Aug-25	Thursday	1000	1015	Burnt Coat Harbor	Harbor Start	--
8	7-Aug-25	Thursday	1100	1800	Penobscot	Race Start	--
8	7-Aug-25	Thursday	2000	2000	Seal Bay	Evening Colors	--
Day	Date	Weekday	Start Time	End Time	Location	Activity	Comment
9	8-Aug-25	Friday	0800	0805	Seal Bay	Colors	--
9	8-Aug-25	Saturday	0810	0830	Seal Bay	Announcements	--
9	8-Aug-25	Sunday	1000	1015	Seal Bay	Harbor Start	--
9	8-Aug-25	Monday	1100	1600	Penobscot	Race Start	--
9	8-Aug-25	Monday	1800	2030	Camden	Shakespeare in the Park	--
9	8-Aug-25	Monday	2000	2000	Camden	Evening Colors	--

Day	Date	Weekday	Start Time	End Time	Location	Activity	Comment
10	9-Aug-25	Saturday	0800	0805	Camden	Colors	--
10	9-Aug-25	Sunday	0810	0830	Camden	Announcements	--
10	9-Aug-25	Monday	1700	1800	Camden	Cocktail Hour	--
10	9-Aug-25	Tuesday	1800	2100	Camden	Finale Dinner	--
10	9-Aug-25	Wednesday	2000	2000	Camden	Evening Colors	--

Yachts and Their MMSI

Count	Yacht	Skipper	Type	MMSI	LOA	Draft	Beam
1	Artemis	Geissinger, John	Sail	338104967	50.7	6.8	13.6
2	Cadenza	Butler, Jr., Edwin	Sail	not listed	36	4.3	12
3	Conundrum	Blasnik, Bruce	Sail	not listed	45	--	14
4	Dracarys	Uribe, Andy	Sail	368036330	47	6	15
5	Dulcinea	Miller, John	Sail	338012362	47	6.2	14.6
6	Evening Song	Tyler, Stephen	Power	368026860	48	6	16
7	Eventide	Woods, Richard	Power	366743590	42	4	14
8	Forever Young	Magida, Ken	Sail	338146408	35.5	4.6	12
9	Fur Elise	O'Brien, Thomas	Sail	not listed	--	--	--
10	Gadzooks	Beringer, Geoffrey	Sail	367474740	37.6	6	12
11	Grace	Kinney, Beth	Sail	not listed	42	--	
12	Hermita	Phillips, Peter	Sail	368026690	40	4	--
13	Maggie	Mutch, Andy	Power	not listed	28	--	--
14	Mandala	Hames, Nancy	Sail	367588360	48	--	--
15	Natural Lee	Desilets, Michael	Sail	338466767	39	5	13
16	Onward	Rocchio, Joseph	Sail	338069872	47	6.2	14.3
17	Owl Moon	Butler, John	Sail	367697740	43	5	13.5
18	Panda V	Burnham, William	Power	not listed	42	3.4	14
19	Patriot	Rittenbaugh, Corky	Sail	367590930	46	5.8	13.8
20	Rally Point	Lane, Tom	Sail	not listed	44	6.4	12.6
21	Sailing Grace	Proctor, Bruce	Sail	not listed	46	--	13.5
22	Sea Star	Nietsch, Eric	Sail	338375007	35	7	11.5
23	Sea U	Delannes, Cécile	Sail	not listed	--	--	--
24	Sophaya	Harding, Peter	Sail	not listed	--	--	--
25	Swanabe	Fraizer, David	Power	367591540	25	--	--
26	Talise	Olivier, Susan	Sail	not listed	--	--	--
27	Tango	Young, Richard	Sail	368181320	44	5.2	12.5
28	White Wing	White, Stuart	Sail	not listed	--	--	--

Participants — by Land

The following Table lists Participants by Land — Members who are driving to a venue.

Participant	Belfast - Launch	Somes	Camden - Finale
Patti Nietsch	-	-	Y
David Kilbride	Y	-	-
Kiran Kimbell	-	-	Y
Bill Kimbell	-		Y
Elena Bowers	Y	-	-
Rich Bowers	Y	-	-
Janice Cannon	-	-	Y
Susan Blount	-	Y	-
Larry Blount	-	Y	-
Walter Englehardt	-	-	Y

Attractions and Activities Along the Cruise Route

PoC / Area / Location	Attraction & Activities	Comments
Belfast	Historic town; walking tour	
Belfast	Front Street Shipyard	
Belfast	Transportation Museum	
Billings Cove	Crafts school	
Boothbay Harbor	Costal Maine Botanical Gardens	
Boothbay Harbor	Bigelow Laboratory for Ocean Sciences; 60 Bigelow Drive; East Boothbay, ME	
Bucks Harbor	Eggemoggin Reach Regatta - Annual Race 2 August 2025	
Burnt Coat Harbor, Swans Island	Sweet Chariot Music Festival	Tickets in Registration
Camden	Camden Library Amphitheater	
Camden	Camden Harbor Park & waterfalls	
Camden	Schooner charter fleet	
Camden	Camden Shakespeare Festival in the Park	Tickets in Registration
Mount Desert Island; Seal Harbor	Abbey Aldrich Rockefeller Memorial Gardens	
Northeast Harbor	Thuya Gardens	
Northeast Harbor	Asticou Gardens	
Northeast Harbor	Asticou Inn	
Rockland	Farnsworth Museum	
Rockland	Sail, Power, Steam Museum	
Somes Sound, MDI	Acadia Park	
Somes Sound MDI	Jordan Pond House	
Somes Sound, MDI	Bar Harbor	
Somes Sound MDI	Acadia Repertory Theater	Matinee 3 Aug 25

Day 1-Thursday, 31 July 2025

Belfast Maine

Port of Call Latitude & Longitude:

44° 29.94 N; 68° 58.33 W

Order of the Day

- See Table: Order of the Day.

Introduction

- Today is the official start of The Corinthians Association Annual Cruise 2025 – Maine
- The main events of the day are:
 - Cruise Registration starting at 1600 hrs
 - Cocktails at 1700 hrs
 - Skippers Meeting at 1730 hrs
 - Cruise Launch Dinner at 1800 hrs

Belfast was selected because it is a very cruise-friendly harbor with all the facilities and amenities needed to get vessels and crews prepared for ten days of wandering about the Penobscot.

- Kathy Pickering, Harbormaster, is wonderful to work with and very boater focused. Stop in to say hello and contact her if you have any challenges.

Port Captain(s)

- Alice Mutch; John Geissinger

Approach

- Belfast is at the NW corner of Penobscot Bay.
- It is at the head of the "Recommended Route" for large commercial vessels enroute to the oil depot at Searsport.
- The route is very well marked.
- Practice good and respectful seamanship by staying clear of ships in the main channel.
- The entrance to Belfast harbor is marked by lighted marker on a rock to starboard (N) of the channel.

- The mooring field occupies both sides of the channel starting at “3”.

Marinas; Moorings: Anchorage

- See Table: Marinas, Moorings, Anchorages.
- See Table: Marine Services.
- Marinas
 - Front Street Shipyard:
 - Belfast Marina:
- Anchorage: Very limited anchorage space in deeper water at harbor entrance – tends to be very rollie due to traffic and weather
- Launch Service:
- Dinghy Dock: City pier at NW corner of harbor. Be respectful use designated dinghy pier.
- Fuel: Lyman Morse Wayfarer Marina.
- Water: Lyman Morse Wayfarer Marina, Camden YC for guests, City pier.
- Pumpout: Pumpout boat available. Call VHF-
- There is a large area to anchor on the W (green) side of the channel S of the mooring fields.

Provisioning

- See Table: Provisioning Opportunities.
- There is a large Hannaford well up the hill on Main Street.
- Belfast Co-op is located just off Main and fairly close to the harbor. It offers a fairly broad selection.
- Chase’s Daily on Main Street is not only a good place to get a healthy sandwich but offers a constantly changing selection of fresh produce from local farms.

Restaurants & Libations

- See Table: Restaurant & Libation Opportunities.
- Young’s Lobsters located just across the harbor from the City Pier is a great place to get a lobster dinner.

Attractions & Activities

- See Table: Attractions & Activities
- Belfast has a long history that is well documented by series of displays with historic photos and background.
- Front Street Shipyard is a major marine construction and maintenance facility serving the yachting and fishing industries with one of the largest travel lifts in the U.S. It was recently created by revitalizing derelict piers and factory buildings. If you should encounter a problem, they are capable of dealing with it.
- Main Street leads up the hill from the city pier and Harbormaster's Office. It offers a wide range of shopping opportunities.

Note: We are delaying the harbor start today to accommodate those who would like to take a walking tour of Belfast; the tour starts at 0900. The meeting point will be at the head of the dock. Morning announcements will confirm this. Restaurants & Bars are sprinkled along Main Street and along Front Street, the first cross street as you go up the hill.

Camaraderie

- A principal focus of today will be to meet fellow Corinthians.
- Registration and the following cocktail hour and dinner will be held at Belfast City Boathouse. This is located on the west shore waterfront S of the City Pier, a short walk through Steamboat Landing Park.
- There will be a music program in the Park tonight so parking is restricted.

Important Notice: See Parking Rules

Racing

- See Table: Racing Activities.
- The Race Chairman will hold a meeting for Captains who will participate in any race during the Cruise to discuss Rules & Courses.

Belfast Almanac and Tides

Almanac					
Port of Call	Day	Date	Sunrise	Sunset	Moonrise
Belfast	1	31-Jul-25	0522	2001	1242
Belfast	2	1-Aug-25	0523	2000	1341
Tides					
Reference Station:	Belfast				
Port of Call	Day	Date	Day of the Week	Time (LST/LDT)	Predicted (ft)
Belfast	1	31-Jul-25	Thu	4:10	9.65
Belfast	1	31-Jul-25	Thu	10:17	1.44
Belfast	1	31-Jul-25	Thu	16:35	9.99
Belfast	1	31-Jul-25	Thu	22:51	1.61
Belfast	2	1-Aug-25	Fri	5:01	9.13
Belfast	2	1-Aug-25	Fri	11:03	1.91
Belfast	2	1-Aug-25	Fri	17:23	9.8
Belfast	2	1-Aug-25	Fri	23:44	1.78

Day 2-Friday, 1 August 2025

Bucks Harbor, Maine

Port of Call Latitude & Longitude

44° 19.89 N; 68° 44.17 W

Order of the Day

- See Table: Order of the Day.

Introduction

- Today is the second day of the cruise and the Fleet will begin its sojourn around the Penobscot.
- The main events of the day are
 - Fleet parade out of the harbor.
 - Race course along route to Bucks Harbor.
 - A “downeast” sail along the famous and picturesque Eggemoggin Reach.
 - Evening festivities among the Fleet on moorings and at anchor in Bucks Harbor.

Port Captain(s)

- Bill Burnham, Sally Stone

Approach

- Bucks Harbor

Marinas; Moorings; Anchorage

- See Table: Marinas, Moorings, Anchorages.
- See Table: Marine Services.
- Harbormaster:
- Marinas: Bucks Harbor Marina
- Anchorage: There is an anchorage just to the E of the E entrance channel that will hold 4 to 10 boats. The center area had depths >20’ with a shallower area along the periphery. Many of the Windjammers use this anchorage during the peak of the summer season. SV Onward has anchored as the lone vessel only to come back from a visit ashore with 3 Windjammers as neighbors. Fun to listen to their music and watch their “rituals”.
- An image from a Garmin-Navionics Sonar Chart of the anchorage is shown below to aid participants in selecting an anchor spot.
- Launch Service: None in local area.
- Dinghy Dock: Bucks Harbor Marina
- Fuel: None in local area.
- Water: Bucks Harbor Marina
- Pumpout: Bucks Harbor Marina
- Marine Services: None in local area.

Provisioning

- See Table: Provisioning Opportunities.
- Bucks Market
- Bucks Harbor Marina

Restaurants & Libations

- Bucks Market is only a short walk, and will be open to 1800 for food and provisions
- Max Janes, a local business owner has provided information on local dining options:
- Buck's Restaurant (New England Fare with Japanese and Mexican influences) within 8-minutes walk of the dock.
- The address of the restaurant is 6 Cornfield Hill Rd Brooksville, ME 04617.
- Phone: [\(207\) 326-8688](tel:2073268688)
- eMail: www.bucksrestaurant.net
- The restaurant offers local seafood dishes and other dishes that are approachable by all.
- Try the Smash burger or signature lasagna
- Restaurant seats 74; Make Reservations!
- It is possible to order to take out.
- **NOTE:** We will be visiting on a Friday night. Yachts planning to have dinner ashore should make reservations ASAP; they use the TOAST app.

Attractions & Activities

- See Table: Attractions & Activities.

Camaraderie

- Bucks Harbor offers a quiet, well-protected anchorage for the Fleet.
- Yachts & Crew will be making their evening meal plans individually.
- A Quaff Around the Fleet cocktail hour and meet and greet will be held from 1700 to 1900

Fun & Games

- Quaff Around the Fleet

Racing

- See Table: Racing Activities.

References & Links

- Bucks Restaurant: Go to website and follow Reservations link to Toast to make reservations.

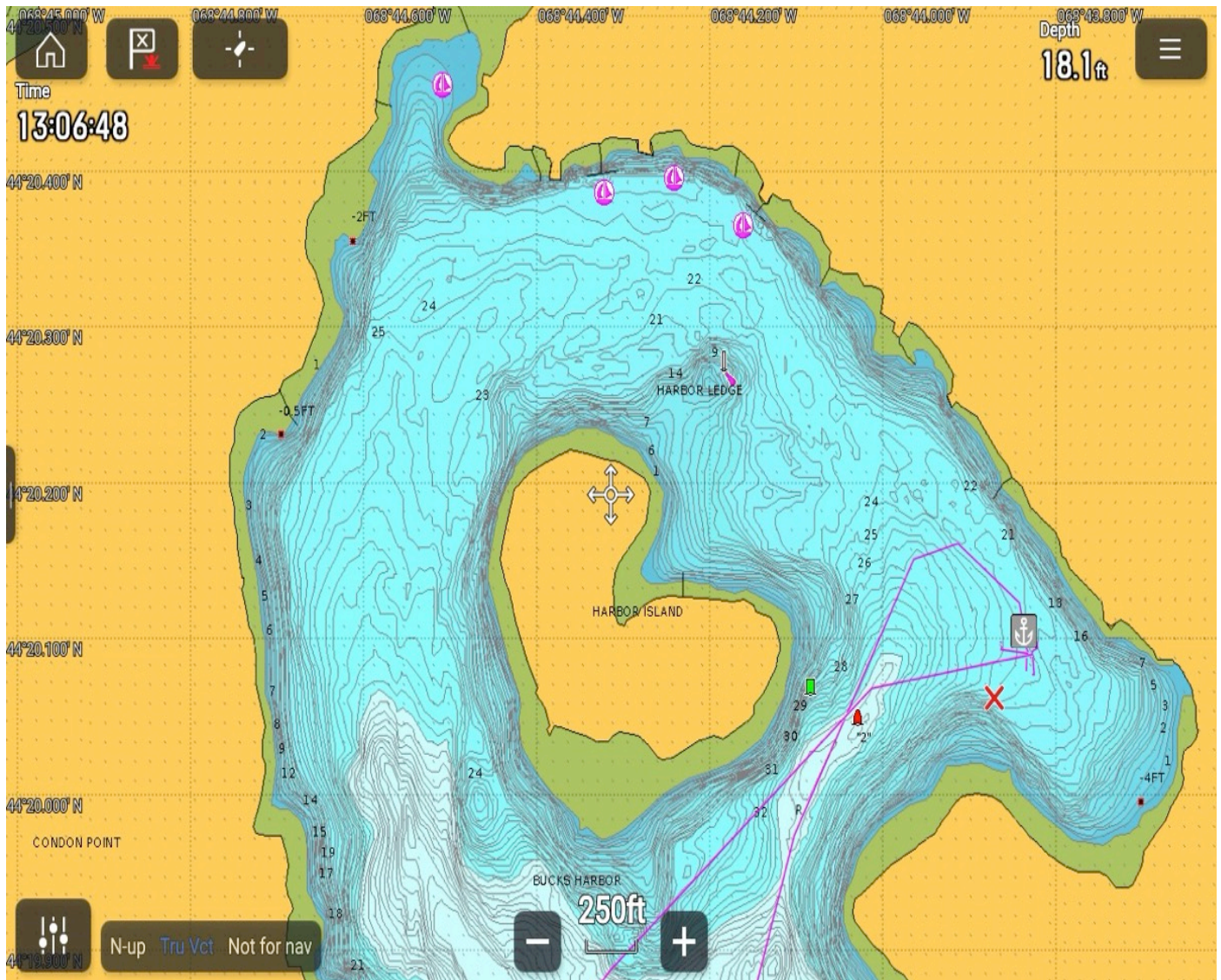
Mooring Assignments

- When Annual Cruise Planning Began, the marina was contacted and agreed to hold all moorings for the Corinthians Fleet.
- Skippers were advised to contact the marina and make a request as a Fleet Member
- The marina then matched request for moorings with those available and assigned them on the basis of the order in which the request was made and then the availability of a mooring that could hold a vessel with that LOA and draft.
- Apparently, the Bucks Harbor Harbormaster has taken to moving moorings about and this has affected the number of moorings assigned to the Fleet.
- The current status of the mooring assignments are per the Table below.
- As of 16 July, the status is still being reviewed / confirmed with the marina owner.

Count	Yacht	Skipper	BHM Mooring	Type	LOA
1	Swanabe	Trish & David Frazier	0	Mooring	25
2	Owl Moon	Diane & John Butler	1	Dock Float	45
3	Sailing Grace	Bruce Proctor	1	Dock Float	46
4	Sea Star	Patti & Rick Nietsch	2	Mooring	35
5	Eventide	Robin & Dick Woods	8	Mooring	43
6	Dracarys	Andy Uribe	10	Mooring	47
7	Forever Young	Arlene Kase & Ken Magida	11	Mooring	40
8	Evening Song	Stephen Tyler	12	Mooring	48
9	White Wings	Stuart & Sondra White	13	Mooring	48
10	Hermita	Phillips, Peter	14	Mooring	
11	Dulcinea	Colleen & John Miller	16	Mooring	47

12	Tango	Cheryl & Richard Young	18	Mooring	44
13	Panda V	Alice & Bill Burnham	19	Mooring	47
14	Onward	Joe Rocchio	20	Mooring	47
15	Artemis	Ann & John Greissinger	21	Mooring	50.8
16	Talise	Sue Olivier	22	Mooring	44
17	Conundrum	Nancy & Bruce Blasnik	23	Mooring	46
18	Rally Point	Gail and Tom Lane	29	Mooring	44
19	Natural Lee	Terri & Mike Desllets	30	Mooring	39
20	Maggie	Alicy & Andy Mutch	33	Mooring	28
21	Patriot	Debbie & Corky Ritterbaugh	N	Anchor	46
22	Cadenza	Butler, Edwin	N	Anchor	
23	Fur Elise	Lauren Cosgrove & Tom Obrien	N	Anchor	
24	Gadzooks	Geoff Beringer	N	Anchor	40
25	Grace	Kinney, Beth	N	Anchor	
26	Mandala	Nancy & Ron Hames	N	Anchor	46
27	Sea-U	Cecile & Yoshi	N	Anchor	
28	Sophaya	Harding, Peter	N	Anchor	

Mooring Field-Bucks Harbor



Day 3-Saturday, 3 August 2025

Billings Cove, ESE Deer Island, Maine

Latitude & Longitude: 44° 11.96 N; 68° 35. W

Order of the Day

- See Table: Order of the Day.

Introduction

- Today is the third day of the Cruise

- The main events of the day are a leisurely sail down to the east end of Eggemoggin Reach past the RW EE buoy and then a short segment to the south to enter the east end of Deer Island Thoroughfare. A final leg of ~ 2.5 nm will bring us to Billings Cove.
- One thing you will quickly learn from cruising Maine is that many locations share the same name for the harbors! I have lost count how many Seal Cove or Seal Harbors there are.
- Please do not go to the Billings Cove off Eggemoggin Reach about 7 miles away as the crow flies.

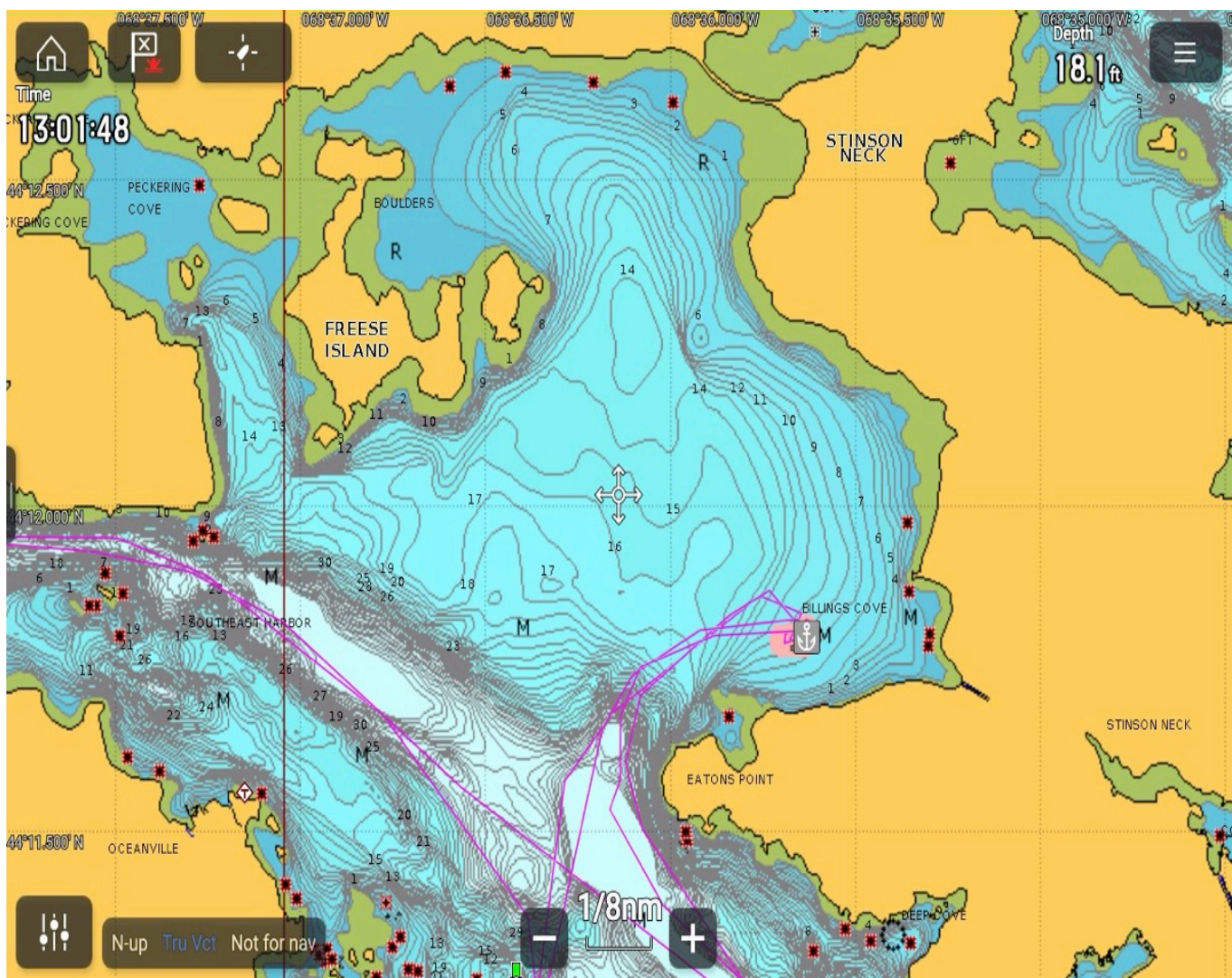
Approach

- Billings Cove is located NE of Stonington at the E end of Deer Isle Thoroughfare (DIT).
- It is a large harbor with good protection for > 270° with good holding.

We will be anchoring in Billings Cove which is to the north as you approach Southeast Harbor. The entrance is straight forward coming from Stonington or Merchants Row. Any dangers are well marked. Billings Cove is the first you will come to. It is larger (The New York Yacht Club Cruise frequents this cove).

- The holding is considered to be good and depending upon the wind forecast one can pick the side of the cove to give adequate protection.
- Please note there is a 4' spot marked on the chart to the NE.
- Anchorage: Large area and good holding. Pick a lee shore for shelter.

Billings Cove Anchorage, ESE Deer Island, Maine



As an added attraction the annual Eggemoggin Reach Regatta & Race will be ongoing today. This is the largest wooden boat regatta in the world since 1985!

EGGEMOGGIN REACH REGATTA

Race Course | August 3, 2024



The start will be Northwest of Torrey Castle and Torrey Ledge

The start line will be between Committee Boat and dinghy with hot pink flag

The race will go down Eggemoggin Reach

Honor N "12" Torrey Ledge and N "8" Torrey Castle. Leave both to PORT

Honor C "7" to avoid Conary Ledge, leaving to STARBOARD

Honor C "5" Channel Rock, leaving to STARBOARD

Leave Egg Rock to STARBOARD
Leave Halibut Rocks STARBOARD

Going back North, leave N "2" to PORT

Honor C "9" off Green Ledge, leaving to PORT

Honor C "5" Channel Rock leaving to PORT

The finish will be between Committee Boat and dinghy with hot pink flag, between Babson and Naskeag Peninsula

Marinas; Moorings: Anchorage

- See Table: Marinas, Moorings, Anchorages.
- See Table: Marine Services.
- Harbormaster: None in local area.
- Marinas: Billings Diesel in Stonington

- Launch Service: None in local area.
- Dinghy Dock: None in local area.
- Fuel: Billings Diesel in Stonington
- Water: Billings Diesel in Stonington
- Pumpout: Billings Diesel in Stonington
- Marine Services: Billings Diesel in Stonington

Provisioning

- See Table: Provisioning Opportunities.
- There are no provisioning opportunities in the local area. Stonington is a short trip away along Merchants Row.

Restaurants & Libations

- See Table: Restaurant & Libation Opportunities.
- There are restaurants in the anchorage. It is possible to take a tender into Stonington.

Camaraderie

- A principal focus of today will be to enjoy sailing in the company of fellow Corinthians.

Fun & Games

Racing

- See Table: Racing Activities.

References & Links

- <https://guides.cruisingclub.org/harbor/stonington/>

Day 4-Sunday, 3 August 2025

Day 5-Monday, 4 August 2025

Somes Sound, Maine

Port of Call Latitude & Longitude:

44° 21.26 N; 68° 18.89 W

Order of the Day

- See Table: Order of the Day.

Introduction

- Today is the fourth day of the Cruise.
- The main events of the day are a leisurely sail from Billings Cove on Deer Isle to the head of Somes Sound on Mount Desert Island.
- A catered dinner by Big Cat's Catering will be held in the Boat Shed at HR Able Yacht Yard on Sunday.
- Theater patrons can take in the matinee of the Acadia Repertory Theater nearby. See the Acadia Repertory webpage of the Cruise Guide.

Port Captain(s)

- Bill Burnham
- Ned Butler

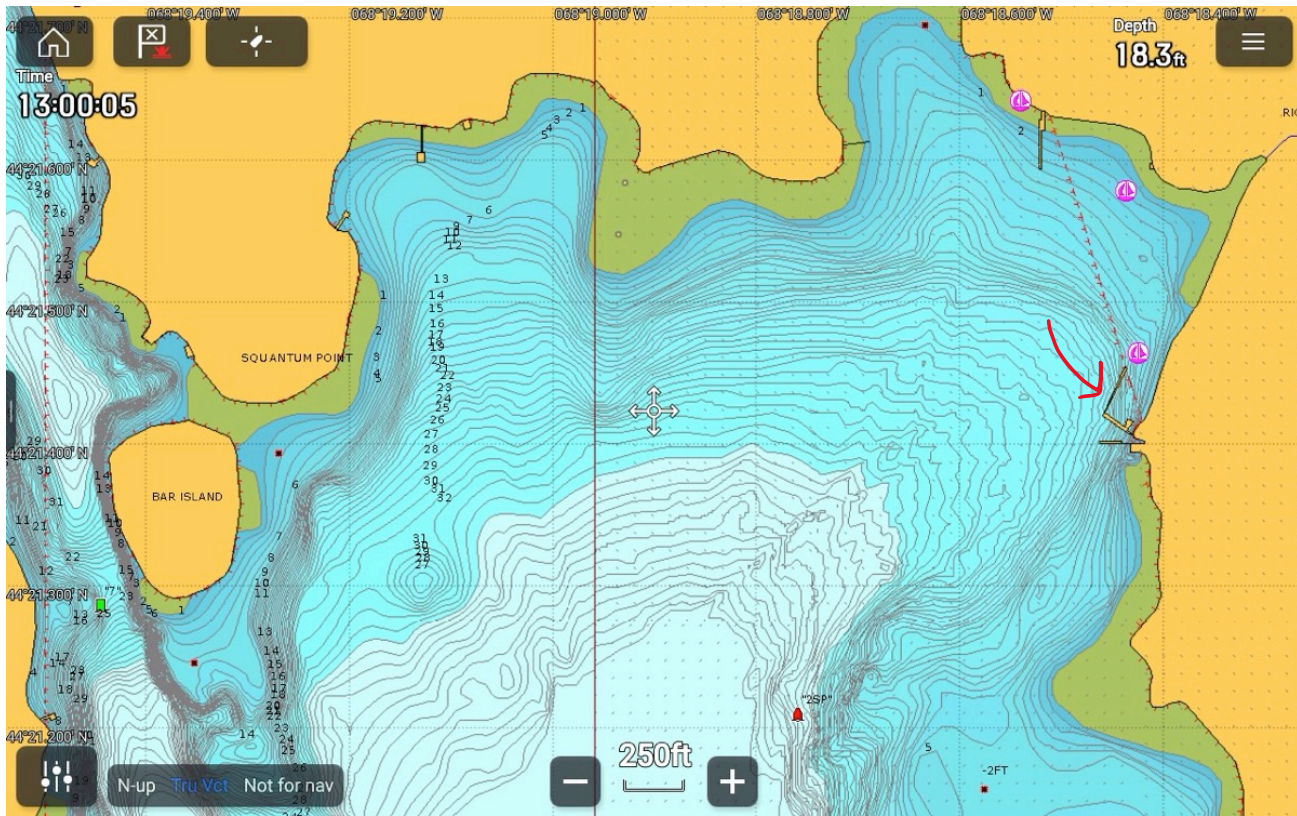
Approach

- Somes Sound

Marinas; Moorings; Anchorage

- See Table: Marinas, Moorings, Anchorages.
- See Table: Marine Services; HR Abel Boatyard
- See Table of mooring assignments at HR Abel YY, below.
- Harbormaster: None in local area.
- Marinas: HR Able Yacht Yard.
- Anchorage: There is a large area suitable for anchoring in the NE corner of Somes Sound in the vicinity of HR Able Yacht Yard.
- Launch Service: None in local area.
- Dinghy Dock: At HR Abel Yacht Yard to South side of service dock. Be respectful: do not tie up to service dock and impede yard operations.
- Fuel: None in local area...closest is Northeast Harbor or Southwest Harbor.
- Water: At HR Able Yacht Yard. Tie up to service dock for a short period.

Somes Sound Anchorage, Northeast Cove -Abels Boatyard



Mooring Assignments

- When Annual Cruise Planning Began, the marina was contacted and agreed to hold all moorings for the Corinthians Fleet.
- Skippers were advised to contact the marina and make a request as a Fleet Member
- The marina then matched request for moorings with those available and assigned them on the basis of the order of the request and the vessel's LOA and draft.
- The current status of the mooring assignments are given in the Table below.
- As of 26 June, the status is being reviewed / confirmed with the marina.

Count	Mooring No.	Yacht	Skipper
1	2	Artemis	Geissinger, John
2	6	Dracarys	Uribe, Andy
3	8	Evening Song	Tyler, Stephen
4	9	Eventide	Woods, Richard
5	10	Forever Young	Kase, Arlene
6	14	Maggie	Mutch, Alice
7	17	Onward	Rocchio, Joseph
8	18	Owl Moon	Butler, John
9	25	Swanabe	Fraizer, David

Provisioning

- See Table: Provisioning Opportunities.

Restaurants & Libations

- See Table: Restaurant & Libation Opportunities.

On Sunday, the Cruise offers a catered buffet dinner in Abels's Boat Shed beginning at 1730 hrs.

On Monday, the traditional Salty Pot will be held in the Boat Shed as well at ????hrs. Cruisers are on their own for dinner. If your appetite prevails, your Cruise Committee recommends Abels Lobster Restaurant for dinner. They are right on the property across from the Boat Shed. They take no reservations but you can order ahead for takeout or for "come as you may" seating outside. Their hours are daily for lunch and dinner from 11:00 AM to 8:30 PM,

Communications

HR Abel Yacht Yard monitors VHF Ch-16

- US Coast Guard: VHF Ch-16
- Corinthians Cruise Communications:
 - VHF Ch-68
 - Website: corinthianscruise.org/Breaking-News

Camaraderie

- A principal focus of today will be to enjoy sailing in the company of fellow Corinthians

Attractions & Activities

- A principal attraction of our anchorage at the head of Somes Sound is it gives access to all of Mount Desert Island (MDI) and Acadia National Park by way of the Island Explorer shuttle bus service. This free (donations encouraged) bus service is sponsored by Friends of Acadia and LL Bean Inc. It runs regularly scheduled routes all over MDI. The hub of the system is the Village Green in Bar Harbor, ~5 mi to the NE of HR Abel Yacht Yard. The Cruise has arranged for the Explorer System manager and dispatcher so that we will be able to alert the drivers of regularly scheduled buses that pass by HR Able YY to stop to pick up and drop off Corinthians. See the MDI Transportation webpage of the Cruise Guide or a brief synopsis below.
- Acadia Repertory Theater. We are in luck! The Acadia Repertory Theater is located on the west shore of Somes sound almost directly opposite the anchorage. They will have a performance of the wonderful comedy by the Theatre People of The Angel Next Door at 2:00 on Sunday August 3rd. Tickets: Interested theater goers should contact the Acadia Repertory Theater directly to secure tickets.

Dinghy across the top of Somes Sound to the landing in the NW corner of Somes and tie up at the town dock just north of the theater; then walk to the theater (<15 minutes).

Transportation on Mount Desert Island

Access to the Island Explorer Buses

- The buses can accommodate 30 passengers sitting and 15 standing.
- Bus will likely have some passengers already on the bus when it goes by your location so we cannot promise we will be able to take a large group all at once.
- If you are heading toward NE Harbor the time would be just after the MDI High School stop.
- If you are heading toward Bar Harbor it would be just after Parkman Mt stop.
- Note: The Cruise will contact the shift supervisor when a group will be out to get the bus so they can alert the driver that folks will be flagging the bus, 207-288-4573.

Island Explorer Route 6

- Island Explorer Bus Rte 6 passes by the HR Abel Yacht Yard in both directions as it makes it loop through Northeast Harbor to Jordan Pond and returns to Bar Harbor.

6. NORTHEAST HARBOR - SUMMER 2025



- We have coordinated with the Island Explorer to make unscheduled stops for Corinthians on Sound Road at HR Able.
- Taking the Explorer to the main terminal at the Village Green in Bar Harbor allows for transfer to all of the other Explorer routes.
- This gives access to all of the wonders of Mount Desert Island and Acadia National Park

BAR HARBOR TO NORTHEAST HARBOR AND JORDAN POND

A	B	C	E	F	F	G	H
VILLAGE GREEN	EAGLE LAKE	HIGH SCHL	BROWN MTN	arrive NEH PIER	depart NEH PIER	SEAL HBR	JORDAN POND
9:25 a	9:30 a	9:40 a	9:48 a	9:55 a	10:05 a	10:12 a	10:25 a
10:25 a	10:30 a	10:40 a	10:48 a	10:55 a	11:05 a	11:12 a	11:25 a
11:25 a	11:30 a	11:40 a	11:48 a	11:55 a	12:05 p	12:12 p	12:25 p
12:25 p	12:30 p	12:40 p	12:48 p	12:55 p	1:05 p	1:12 p	1:25 p
2:25 p	2:30 p	2:40 p	2:48 p	2:55 p	3:05 p	3:12 p	3:25 p
3:25 p	3:30 p	3:40 p	3:48 p	3:55 p	4:05 p	4:12 p	4:25 p
4:25 p	4:30 p	4:40 p	4:48 p	4:55 p	5:05 p	5:12 p	5:25 p
5:25 p	5:30 p	5:40 p	5:48 p	5:55 p	-	-	-
6:45 p	6:50 p	7:00 p	7:08 p	7:15 p	-	-	-

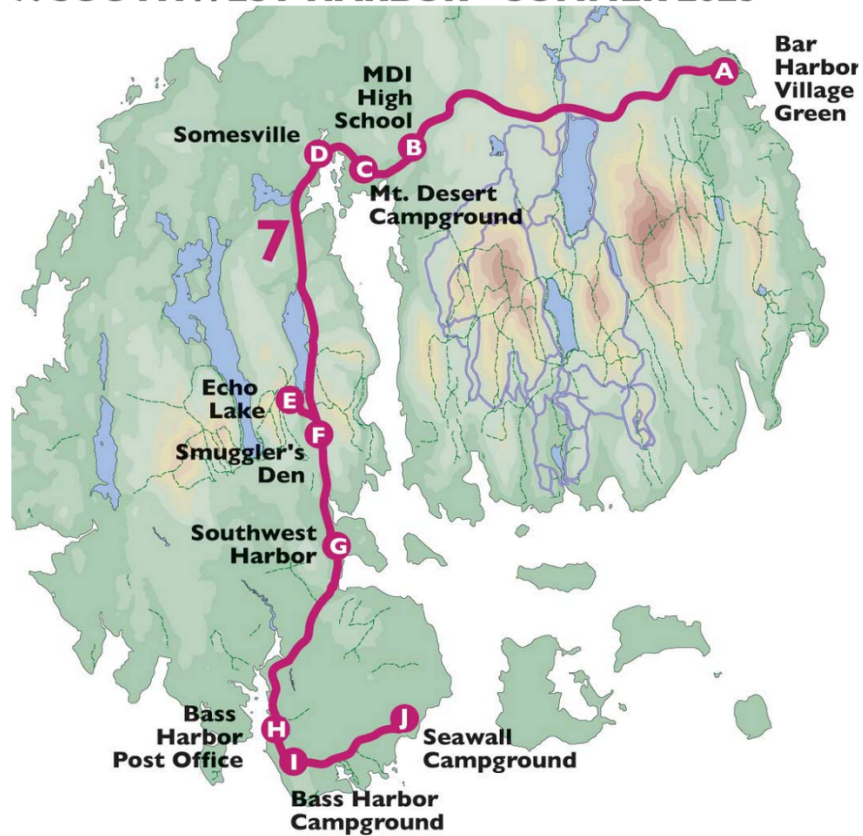
Island Explorer Route 7

- Island Explorer Bus Route 7 passes about 0.75 miles north of the HR Abel Yacht Yard as it makes it loop through Southwest Harbor to Jordan Pond and returns to Bar Harbor.
- For anyone who wants to travel to Southwest Harbor or Bass Harbor the Island Explorer can be flagged to make unscheduled stops for Corinthians.
- This will allow access to all of the wonders of southwest Mount Desert Island and Acadia National Park

ROUTE 7: SOUTHWEST HARBOR TO BAR HARBOR

J	I	H	G	F	E	D	C	B	A
SEAWL CMPGD	BASS HBR CG	BASS HBR PO	SWH MAIN ST	SMUG DEN	ECHO LAKE	SOMES- VILLE	MT DES CMPGD	HIGH SCHOOL	VILLAGE GREEN
-	-	-	7:15 a	-	-	-	7:28 a	-	7:43 a
9:00 a	9:05 a	9:07 a	9:12 a	9:17 a	9:20 a	9:30 a	9:35 a	9:37 a	9:50 a
11:10 a	11:15 a	11:17 a	11:22 a	11:27 a	11:30 a	11:40 a	11:45 a	11:47 a	12:00 p
1:55 p	2:00 p	2:02 p	2:07 p	2:12 p	2:15 p	2:25 p	2:30 p	2:32 p	2:45 p
3:10 p	3:15 p	3:17 p	3:22 p	3:27 p	3:30 p	3:40 p	3:45 p	3:47 p	4:00 p
5:55 p	6:00 p	6:02 p	6:07 p	6:12 p	6:15 p	6:25 p	6:30 p	6:32 p	6:45 p
8:00 p	8:05 p	8:07 p	8:12 p	8:17 p	-	8:22 p	8:27 p	8:29 p	8:42 p

7. SOUTHWEST HARBOR - SUMMER 2025



ROUTE 7: BAR HARBOR TO SOUTHWEST HARBOR

A	B	C	D	E	F	G	H	I	J
VILLAGE GREEN	HIGH SCHOOL	MT DES CMPGD	SOMES-VILLE	ECHO LAKE	SMUG DEN	SWH MAIN ST	BASS HBR PO	BASS HBR CG	SEAWL CMPGD
7:50 a	8:02 a	8:05 a	8:08 a	8:20 a	8:23 a	8:27 a	8:35 a	8:37 a	8:42 a
10:00 a	10:12 a	10:15 a	10:18 a	10:30 a	10:33 a	10:37 a	10:45 a	10:47 a	10:52 a
12:15 p	12:27 p	12:30 p	12:33 p	12:45 p	12:48 p	12:52 p	1:00 p	1:07 p	1:07 p
2:00 p	2:12 p	2:15 p	2:18 p	2:30 p	2:33 p	2:37 p	2:45 p	2:47 p	2:52 p
4:15 p	4:27 p	4:30 p	4:33 p	4:45 p	4:48 p	4:52 p	5:00 p	5:02 p	5:07 p
7:00 p	7:12 p	7:15 p	7:18 p	-	7:25 p	7:29 p	7:37 p	7:39 p	7:44 p
8:57 p	9:09 p	9:12 p	9:15 p	-	9:22 p	9:26 p	9:34 p	9:36 p	9:41 p

Day 6; Wednesday; 5 August 2025

Pretty Marsh Harbor

NE Mount Desert Island

Port of Call Latitude & Longitude:

44° 19.90 N; 68° 24.66 W

Introduction

- Today is the sixth day of the Cruise and will take the Fleet from Somes Sound SSW to Pretty Marsh Harbor in the NW quadrant of Mount Desert Island.
- The main events of the day are:
 - Fun & games in the anchorage
 - Cocktails and dining aboard boats in the anchorage

Port Captain(s)

- John Geissinger

Approach

- The Fleet will retrace its course south from the head of Somes Sound south past Bear I to starboard, Sutton Island and Great Cranberry Island to port.
- Then, taking G1 to port, the course will be W through the Bass Bar channel.
- The course is then NW ($\sim 315^\circ$) to make the passage NNE between Moose Island to starboard and Hardwood Island to port.
- A course of $\sim 30^\circ$ for ~ 3 nm will bring us into the anchorage.

Marinas; Moorings: Anchorage

- Harbormaster: None
- Marinas: None
- Anchorage: Y
- Launch Service: No
- Dinghy Dock: No
- Fuel: None. Fuel and all other needs are available in Southwest Harbor.
- Water: No
- Marine Services: None nor Pump out

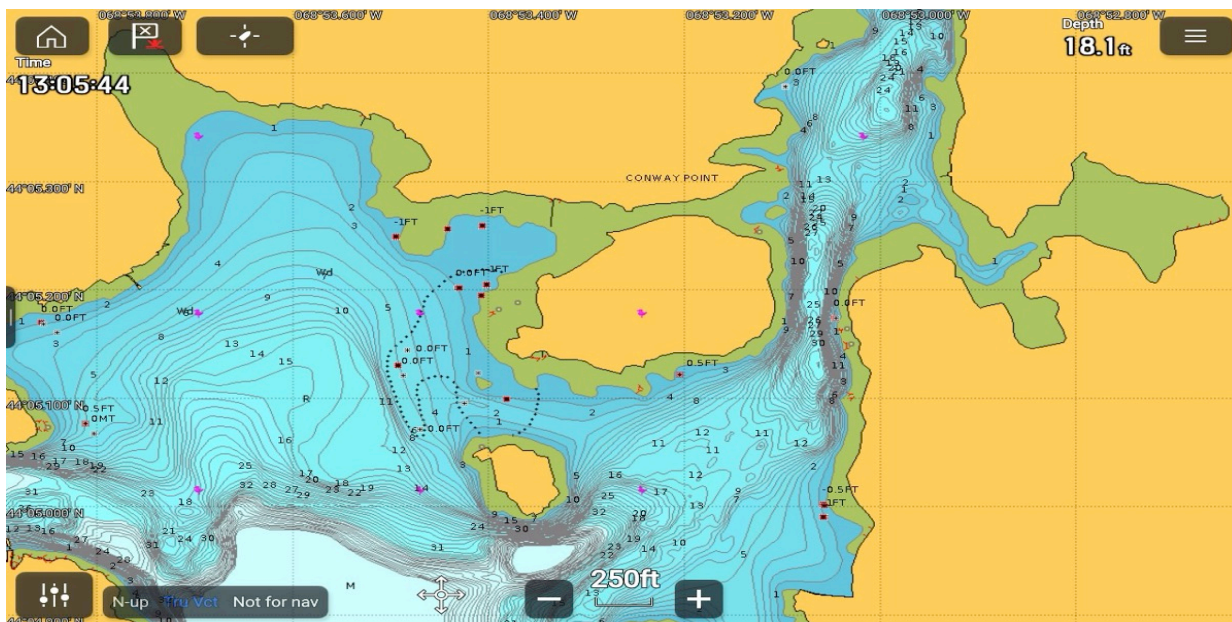
Provisioning

- Provisioning can be had at Bar Harbor (by bus from Ables Yacht Yard on Somes Sound) or in Southwest Harbor.

Communications

- # Camaraderie

- ## Pretty Marsh Harbor Anchorage



Day 7; Wednesday; 6 August 2025 Burnt Coat Harbor,

SSW Swans Island, Maine

Port of Call Latitude and Longitude

44° 07.98 N; 68° 26.75 W

Order of the Day

- See Table: Order of the Day.

Introduction

Today is the sixth day of the Cruise and it will take us from Pretty Marsh Harbor SSW to Swans Island. There are two anchorages....Mackerel Cove on the north central coast of Swans Island or Burnt Coat (Cote) Harbor, an inlet in the south central coast offering a very picturesque entrance through a narrow passage overlooked by a classic lighthouse. The Fleet will be gathering in Burnt Coat Harbor. It is possible to anchor in the northern Mackerel Cove. Access to shore is by dinghy to the dock on the S side of the ferry landing. Be respectful of needs of local residents.

The Fleet will participate in the annual Sweet Chariot Music Festival which is held in the Odd Fellows Hall. This is about mid-way between the two anchorages. There will be additional Festival festivities in the Anchorage. The Cruise Committee is working with the Festival organizer to secure as many moorings in Burnt Coat Harbor as possible for the Fleet. The Fleet should plan to be at Anchor by 1530 hrs and dress ship. Boats associated with the Festival will begin serenading the Fleet with Shanties at 1600 hrs.

Port Captain(s)

- John Geissinger

Approach

- Burn Coat Harbor is on the south central coast of Swans Island

Marinas; Moorings; Anchorage

- See Table: Marinas, Moorings, Anchorages.
- See Table: Marine Services.
- Harbormaster: None in local area.
- Marinas: None in local area.
-

There is a large anchorage for the Corinthians Fleet that will allow participation in the Sweet Chariot Music Festival Activities both on the visiting schooners and ashore.

- Launch Service: None in local area.
- Dinghy Dock: See Below

The local lobstermen's cooperative run by Tim Trafton is allowing use of their pier – on a non-interference basis when there are no lobstering activities. Please be respectful of the working needs of these great people.

The local sailing club has installed a new dock that they will make available to we Corinthians. Please be respectful of their ongoing activities.

- Fuel: None in local area but see below which is not assured.
- Water: None in local area.
- Pumpout: None in local area.

Provisioning

- See Table: Provisioning Opportunities.

Restaurants & Libations

- See Table: Restaurant & Libation Opportunities.
- There are few opportunities for dining ashore around Burnt Cote Harbor.
- The Cruise Committee noted this information from the Swans Island website....

There is a Fisherman's Coop dock with gas and diesel (207-526-4327) and another wharf that has a sign for "ICE" where you can leave a dinghy. The only market is TIMS (The Island Market and Supply) where a small amount of fresh vegetables and lots of dry goods are available. Swan's island is dry. There are no restaurants.

Tim Trafton is a lobsterman who cooks lobsters and serves them on a picnic table from 1600-1800 hours with prior notice. Tim rents e-bikes and will provide car transport as well. There is a quarry for fresh water swimming. Dinghy east past Tim's dock (also known as Swan's Island Yacht Club) to the dock at the abandoned fish plant. Walk up the road and bear right to the quarry. It's heavenly.

Trafton's notwithstanding, it is recommended that each yacht treat the lunch and dinner meals in Burnt Cote Harbor as a good time to have a picnic meal aboard or on shore so that crew will be able to adapt and participate in the many activities that will be "happening" around us as part of the Festival

Attractions & Activities

- See Table: Attractions & Activities.
- The Sweet Chariot Music Festival is ongoing and the Fleet will arrive on its second day.
- Festival tickets will be provided to skippers and crew.
- The Fleet should be at anchor by 1530.

- Boats from the Sweet Chariot Music Festival will begin serenading the Fleet with Shanties starting at 1600

Burnt Coat (Cote) Harbor Anchorage-Swans Island



Day 8; Thursday, 7 August 2025

Seal Bay

NW Vinalhaven I, Maine

Port of Call Latitude & Longitude:

44° 05.77 N 68° 48.14 W

Order of the Day

- See Table: Order of the Day.

Introduction

- Today is the 8th day of the Annual Cruise.
- The main events of the day are the cruise from Burnt Coat Harbor, Swans Island to Long Cove in the NW quadrant of Vinalhaven Island.
- Before departing Burnt Coat Harbor, the Cruise Committee will review wind and sea forecasts to assess the suitability of Long Cove for the Fleet.
- Alternative anchorages are in the SW quadrant of Vinalhaven Island, Seal Harbor / Winter Harbor.
- The Annual Cruise One-Hand-for-the-Beverage & One-for-the-Oar two-person dinghy rowing race will be held. Depending on the tide, the race will be up and back through the reversing falls at the head of Long Cove.

Port Captain(s)

- Bill Burnham

Approach

- Long Cove, Hurricane Sound, NW Vinalhaven Island

Marinas; Moorings; Anchorage

- See Table: Marinas, Moorings, Anchorages.
- See Table: Marine Services.
- Harbormaster: None in local area.
- Marinas: None in local area.
- Anchorage: The anchorage is long and narrow and often accommodates fleets of cruising yachts. One may anchor outside the cove where there are public mooring balls with a tall boy and cup for depositing the night's mooring fee. There may be a posted fee or a note to pay at your discretion.
- Launch Service: None in local area.
- Dinghy Dock: None in local area.
- Fuel: None in local area.

- Water: None in local area.
- Pumpout: None in local area.

Provisioning

- See Table: Provisioning Opportunities.

Restaurants & Libations

- See Table: Restaurant & Libation Opportunities.

Attractions & Activities

- See Table: Attractions & Activities.

Communications

- US Coast Guard: VHF Ch-16
- Corinthians Cruise Communications:
 - VHF Ch-?
 - Website: corinthianscruise.org/BreakingNews

Camaraderie

- A principal focus of today will be to race, engage in activities in the anchorage with fellow Corinthians.

Fun & Games

Racing

- See Table: Racing Activities.

Day 9; Friday, 8 August 2025 Camden, Maine

Port of Call Latitude & Longitude:

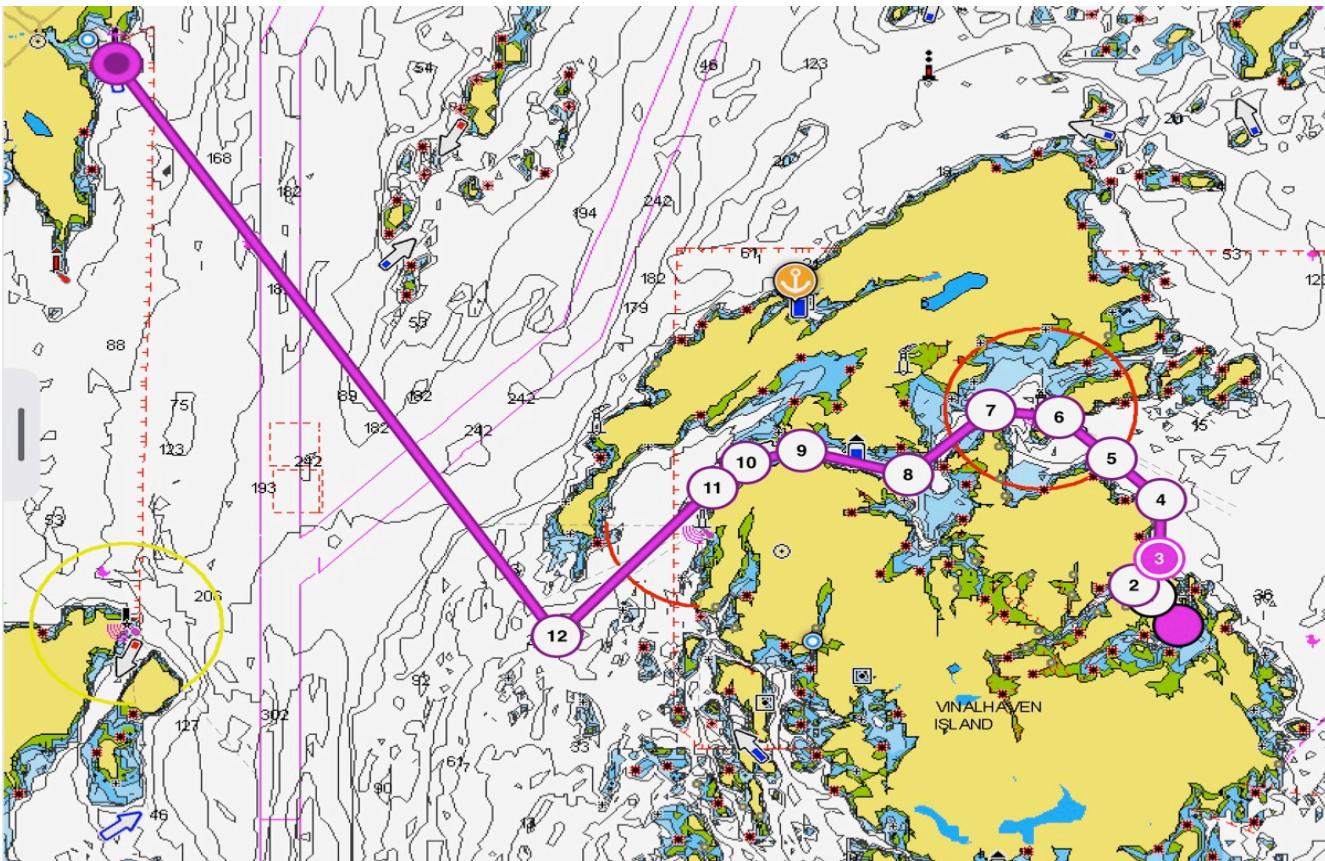
44° 12.15 N; 69° 02.70 W

Order of the Day

- See Table: Order of the Day.

Introduction

- Today is the 9th day of the Annual Cruise.
- The main events of the day are a short cruise from Seal Bay west to Camden.
- An early arrival in the harbor should provide a plenty of time to explore the many Retail Exercise Opportunities as well as lunch in the many restaurants and pubs at the head of the harbor.



Port Captain(s)

- Joe Rocchio

Approach

- Camden

Marinas; Moorings: Anchorage

- See Table of Marinas, Moorings, Anchorages.
- See Table of Marine Services.
- Anchorage: Very limited anchorage space in the deeper water at harbor entrance – tends to be very rollie due to traffic and weather
- Launch Service: Lyman Morse Wayfarer Marina, Camden Yacht Club – for their patrons.
- Dinghy Dock: City pier at NW corner of harbor. Be respectful; use designated dinghy pier.
- Fuel: Lyman Morse Wayfarer Marina.
- Water: Lyman Morse Wayfarer Marina, Camden YC for guests, City pier.
- Pumpout: Pumpout boat available.

Provisioning

French and Brawn Market, One Elm Street (207) 236-3361

Restaurants & Libations

- See Table: Restaurant & Libation Opportunities.

Attractions & Activities

- See Table: Attractions & Activities.
- Camden Shakespeare Festival. The Festival will have a performance of Two Gentlemen of Verona in the Library Amphitheater across the street from Harbor Park and overlooking the harbor. Tickets will be provided to Skippers & Guests.

Day 10; Saturday; 9 August 2025

Camden, Maine

Order of the Day

- See Table: Order of the Day.

Introduction

- Today is the 10th day of the Annual Cruise and the Cruise Finale!
- The main events of the day are the Finale Cocktail Hour, Dinner, Awards Presentation at the Camden YC beginning at 1700hrs.
- Enjoy a relaxing day exploring Camden. There are a myriad of shops, boutiques, and art galleries to provide plenty of retail relaxation exercise.
- The Camden Yacht Club is located a short walk from the dinghy dock near the waterfall at the head of the harbor. Just follow the West shore waterfront.

Port Captain(s)

- Joe Rocchio

Approach

- Relax – the Fleet is not moving today! So enjoy a lazy morning. Then follow it up with a tasty lunch ashore.
- Pumpout: Pumpout boat available.

Provisioning

French and Brawn Market, One Elm Street (207) 236-3361

- VHF Ch-?
- Website: corinthianscruise.org/BreakingNews

Camaraderie

- A principal focus of today will be to race, engage in activities in the anchorage with fellow Corinthians.

Food & Libation Opportunities

--	--	--	--	--

Port of Call	Type	Name	Phone	Website
Bar Harbor				
Belfast	Lobster Wharf	Youngs Lobster Pound	207-338-1160	youngslobsters.com
Belfast		Dockside Family Restaurant	(207) 218-1675	
Belfast				
Billings Cove				
Boothbay Harbor	Yacht Club	Boothbay Harbor Yacht Club	(207) 633-5750	
Boothbay Harbor	Restaurant	Harbor side 1901 Bar and Grill	(207) 315-6043	www.harborside1901.com
Boothbay Harbor	Restaurant	Ports of Italy	(207) 633-1011	www.portsofitaly.com
Bucks Harbor	Restaurant	Bucks Restaurant		www.bucksrestaurant.net
Camden	Hotel Restaurant Rooftop Bar	16 Bay View	(207) 706-7990	
Camden	Restaurant	40 Paper		https://40paper.com/
Camden	Hotel Restaurant	Camden Harbour Inn	(207) 236-4200	
Camden	Yacht Club	Camden Yacht Club	(207) 236-7033	
Camden	Bar Bistro	Salt Wharf @ Lyman Morse		
Camden	Brewery Restaurant	Sea Dog Brewing Company	207-230-1306?	https://www.seadogbrewing.com/loc
Camden	Restaurant	The Waterfront Restaurant		
Long Cove				
Northeast Harbor	Hotel Restaurant	Asticou Inn; Claremont Hotel		
Islesford	Restaurant	Isleford Dock and Restaurant	(207) 244-7494	www.islesforddock.com
Pretty Marsh Harbor				
Rockland	Restaurant	Archers on the Pier	(207) 594-2435	www.archersonthepier.com
Rockland	Restaurant	Landings Restaurant	(207) 594-3011	www.thelandingsrestaurant.com
Rockland	Restaurant	Hill's Seafood	(207) 593-8400	www.hillsseafoodco.com

Rockland	Restaurant	Rustica Cucina Italiana	(207) 594-0015	www.rusticamaine.com
Rockport	Restaurant	Peter Ott's	(207) 236-4032	www.peterotts.com
Seal Harbor				
Somes Sound	Lobster Restaurant	Ables Lobster	(207) 276-8221	https://www.abelslobstermdi.com/



Racing

One of the traditions of The Corinthians Annual Cruise is to conduct en-route races as the Fleet wends its way along the path between ports of call.

This year Race Chairman Chris Rogers and Race Designer Tom Stoner have prepared a set of six races over the ten days of the Cruise.

RACE INSTRUCTIONS

15. CORINTHIANS RACING INSTRUCTIONS

1. RULES

1.1 The regatta will be governed by the rules as defined in The Racing Rules of Sailing 2021-2024 as published by US Sailing. The Race Committee may change any rule that is contrary to the spirit of the event.

1.2 The Corinthians current PHRF handicaps shall apply.

1.3 Any changes to the sailing instructions will be announced prior to the 10 minute starting window on VHF channel 74.

2. SCHEDULE OF RACING

2.1 One race will be held on the designated racing day.

3. COURSES

3.1 Please see the attachment for Course Details that show the courses, course marks in order, and the rounding direction of each mark.

3.2 Should the Race Committee decide to move the start to another mark, it will announce the change on the radio.

3.3 The Race Committee will announce any course shortening as soon as

practical during the race and will attempt to do so prior to the first boat rounding the last mark of the course before the finish line. The course change will be announced by one long blast of a horn and will be announced on the designated VHF Channel.

3.4 The Race Committee can abandon the race at its discretion.

3.5 All marks will be government buoys unless otherwise specified in the racing instructions.

3.6 All government marks marking obstructions must be obeyed.

3.7 The Race Committee boat may also be a participant in the race and would be the last boat to start just after the 10 minute window.

4. THE START

4.1 The starting line shall be at the buoy designated as the starting mark as specified in the Course Details. Each boat shall record their own starting time taken when the boat is at a 90 degree angle to a straight line to the first leg of the course from the main mast and within 100 feet of the starting mark. All racers shall record their own time at the start using GPS time within the designated 10 minute starting window.

4.2 The Race Committee will attempt to start the starting window as announced in that day's morning announcements in the vicinity of the starting buoy. A horn blown twice will announce that the Race Committee boat is on station. A series of six short horn blasts will indicate the start of the 10 minute window.

5. THE FINISH

5.1 The finish line shall be at the buoy designated as the finishing buoy in the Course Details. The Race Committee boat will not be stationed at the finish line.

5.2 Each boat shall record its time of finish as determined by GPS time. This time will be taken when the boat is at a 90 degree angle to a straight line to the last leg of the course from the main mast and within 100 feet of the finishing mark. After finishing please report the finish time by text message to Rick Nietsch at 203-856-4389 in this format: Boat name/Sail Number/Race number/Start time/Finish time (using 24 hour clock). For example: Saucy Sal/4044/100653/140237. If possible, the boat shall report the names or numbers of surrounding boats finishing before and/or after her. If texting is not possible a report shall be made to the Race Committee by radio before 1700 hours that day.

6. TIME LIMIT

6.1 Any boat in their class that finishes before 1630 hours shall constitute a race for that class for that day.

7. PENALTY SYSTEM

7.1 A boat intending to protest shall immediately hail the offending boat and promptly display a red protest flag on the backstay at the time of the offense to provide the offender the opportunity to make a 360 degree turn as prescribed in the racing rules. A boat making or accepting a racing penalty must inform the Race Committee at the finish line or as soon as possible if the Race Committee is not at the finish line.

7.2 A scoring penalty of 5% of the boat's elapsed time in each race will apply when the Race Committee determines that a boat has broken a racing rule and has not been exonerated by making a penalty circle.

8. PROTESTS AND REQUESTS FOR REDRESS

8.1 Protest forms will be available from the Race Committee and shall be delivered by 1900 hours on the day of the race.

8.2 Protest hearings will be held as soon as possible after the protest has been filed and all parties have reached the evening's cruise destination. A competitor who is not involved in the protest or witness to it may serve on the protest committee.

9. SCORING

9.1 All boats must have a PHRF rating as accepted by The Corinthian Measurer.

9.2 The Low Point Scoring System will be used. There will be no discards. Ties will be determined by the procedure described in The Racing Rules of Sailing 2021-2024 as published by US Sailing.

9.3 A boat that starts but does not finish within the time limit or retires to reach the cruise destination will be scored one more point than the last finisher in her Class.

9.4 PHRF time-on-distance scoring will be used.

10. SAFETY REGULATIONS

10.1 Each skipper is entirely responsible for the safety of his or her crew. It is strongly suggested that life jackets be worn during inclement weather.

10.2 A racing boat shall check in by radio or by hailing the Race Committee as she sails by their stern at the start of the race. A boat retiring from a race shall notify the Race Committee by radio on the designated fleet channel or by cell phone to the Race Chair as soon as possible.

11. COMMUNICATIONS

11.1 The Race Committee will monitor and use VHF channel 74 for

communication to competitors. Any changes to the Race Instructions such as courses, start times and time limits will be announced prior to each race.

11.2 Weather information from radio, public web sites, or private cell phones may be used while racing.

12. PRIZES

12.1 The race results will be announced either at the evening festivities or soon thereafter.

13. DISCLAIMER OF LIABILITY

13.1 Sailing is an activity that has an inherent risk of damage and injury. Competitors participate in the race entirely at their own risk. See RRS 4, Decision to Race.

The race organizers (organizing authority, race committee, protest committee, host club, sponsors, or any other organization or official) will not be responsible for damage to any boat or other property or the injury to any competitor, including death, sustained as a result of participation in this event. By participating in this event, each competitor agrees to release the race organizers from any and all liability associated with such competitor's participation in this event to the fullest extent permitted by law.

All competitors shall maintain adequate insurance coverage.

14. INSURANCE

14.1 Each participant shall hold a valid insurance certificate showing proof of third-party liability coverage of at least \$300,000 (or equivalent) per incident.

RACE COURSES

2025 Corinthians Annual Cruise Race List

Notes:

Bearing (Brg) indicates true bearing from own ship to the mark for recording starting or finishing

Races may be shortened by starting at later marks, or finishing at earlier marks

Race 1 (8/1/2025) – Belfast to Buck’s Harbor

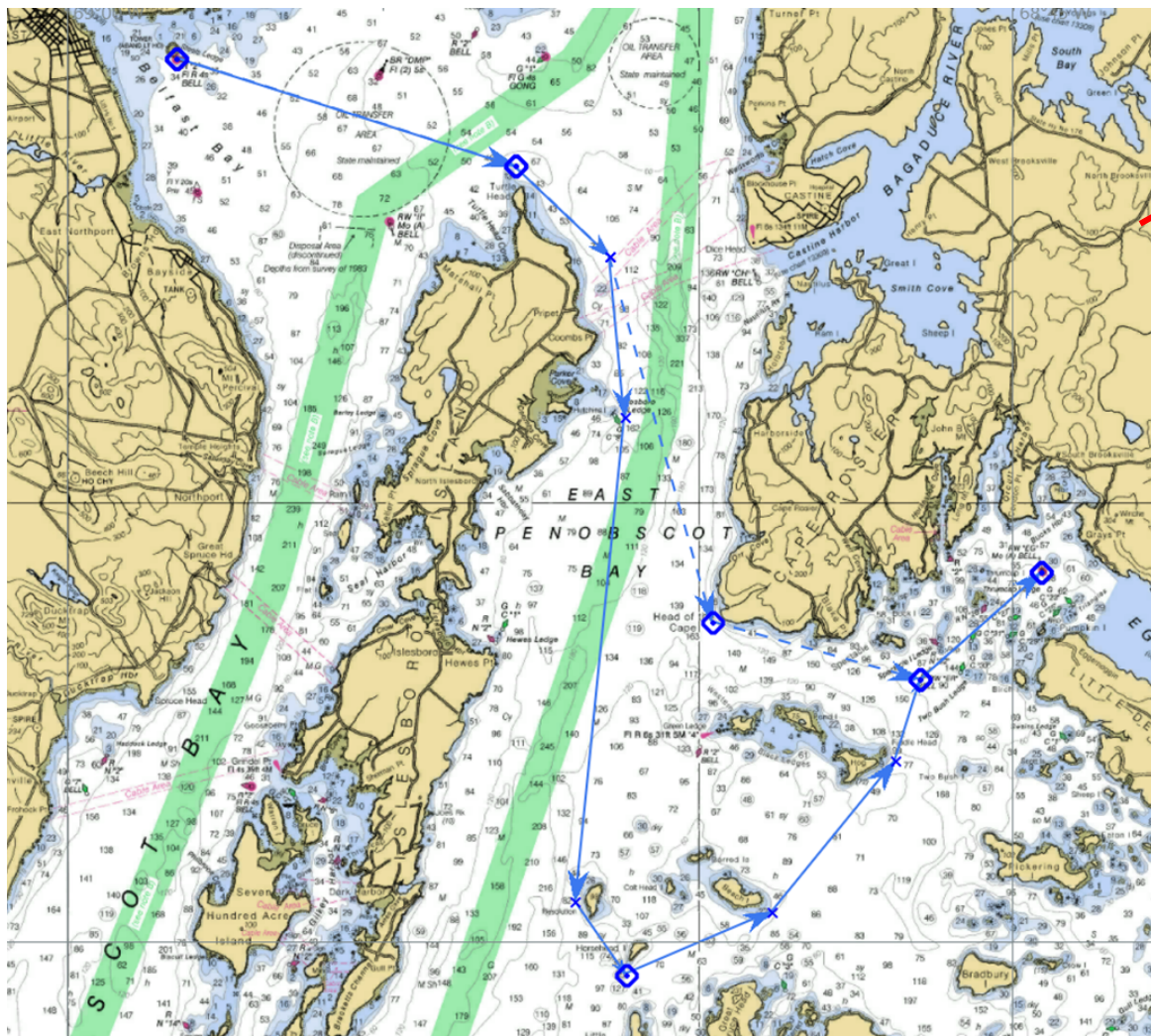
Long Course

1. Start at Steels Ledge bell ‘R2’ – leave to port (Brng 018T) [44° 25.1' N / 068° 58.3' W]
 2. Leave Isleboro Island (Turtle Head) to starboard [44° 23.8' N / 068° 52.9' W]
 3. Leave Isleboro Ledge can ‘G9’ to starboard [44° 21.0' N / 068° 51.2' W]
 4. Leave Horsehead Island to port [44° 14.6' N / 068° 51.2' W]
 5. Leave Eggmoggin Reach bell ‘ER’ to starboard (If Finish Brng 106T) [44° 18.0' N / 068° 46.5' W]
 6. Finish at Eggmoggin Reach bell ‘EG’ – leave to starboard (Brng 138T) [44° 19.2' N / 068° 44.6' W]
- Approximate distance: 20.7 Nmi, time limit 6 hr (unless shortened)

Short Course

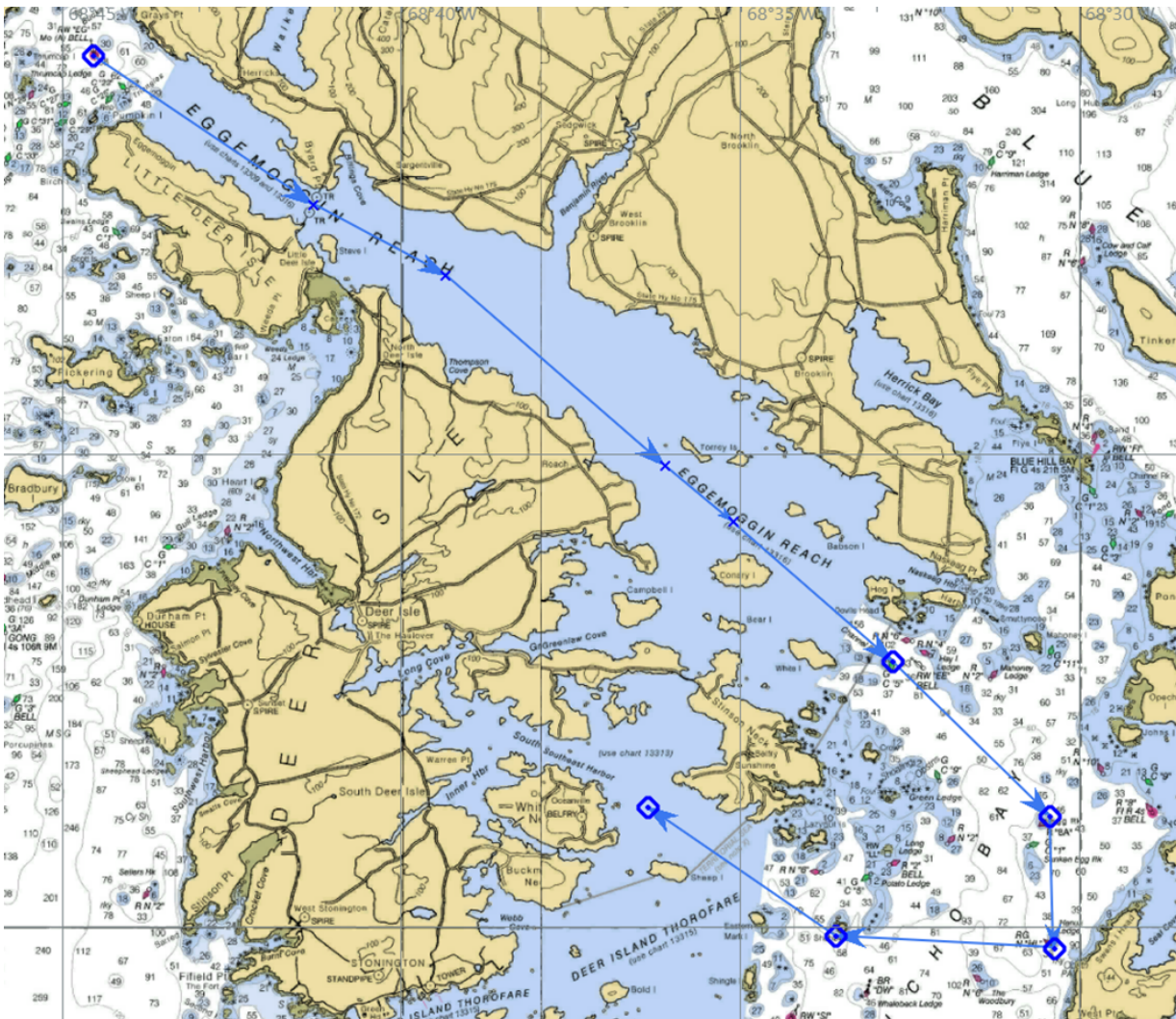
1. Start at Isleboro Is. Buoy “Ii” – leave to port (Brng 347T) [44° 23.1' N / 068° 54.9' W]
2. Leave Isleboro Island (Turtle Head) to starboard [44° 23.8' N / 068° 52.9' W]
3. Leave Eggmoggin Reach bell ‘ER’ to Port (If Finish Brng 014T) [44° 18.0' N / 068° 46.5' W]
4. Finish at Eggmoggin Reach bell ‘EG’ – leave to starboard (Brng 138T) [44° 19.2' N / 068° 44.6' W]

shortened distance: ~11.6 Nmi Time Limit 4 hr (unless shortened)



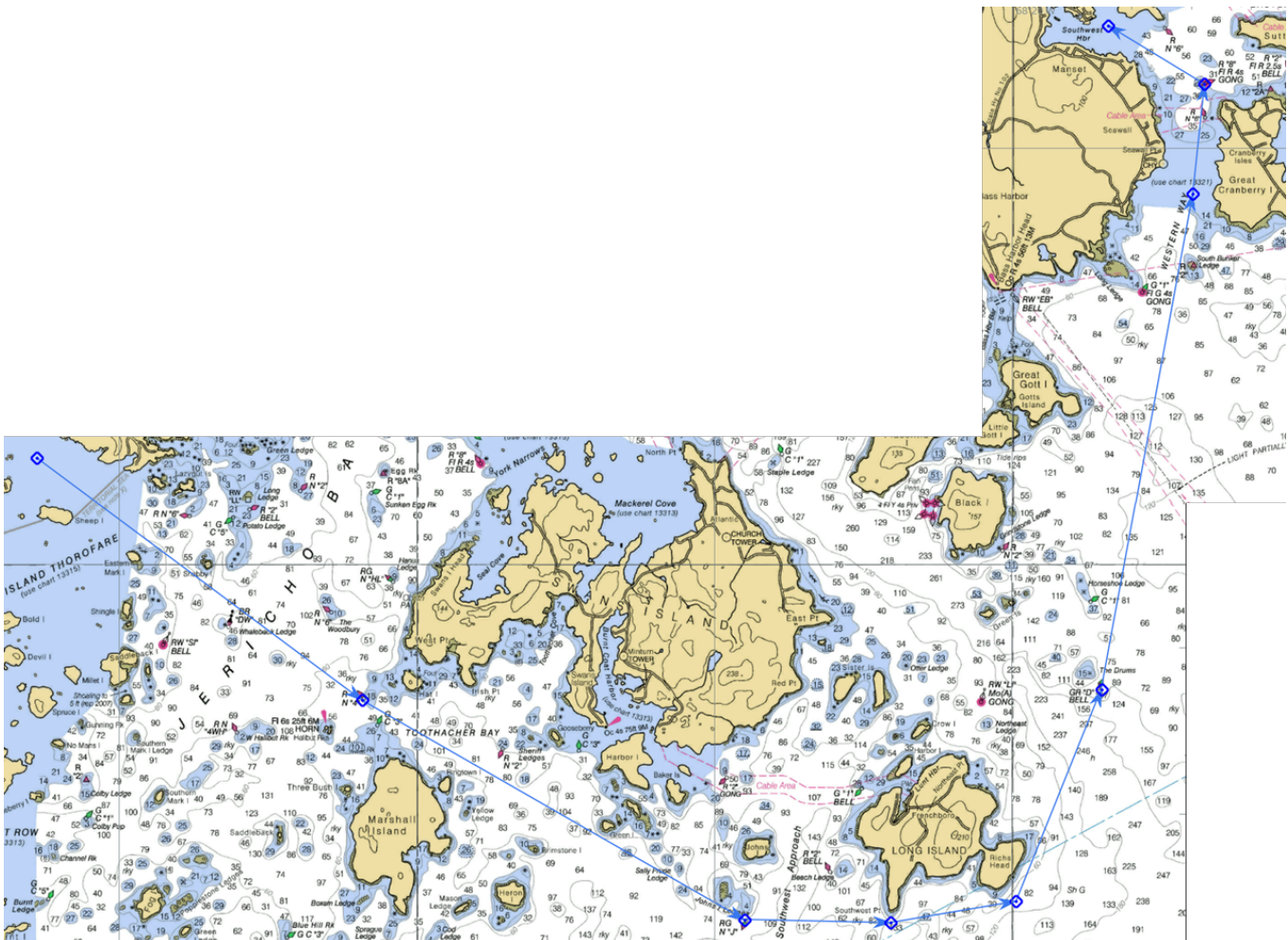
Race 2 (8/2/2025) – Buck's Harbor to Billing's Cove

1. Start: Leave Eggmoggin Reach bell 'EG' to port (Brg 032T) [44° 19.2' N / 068° 44.6' W]
 2. Leave Tinker Ledges 'G17' to Stbd (If start, Brg:220T) [44° 15.9' N / 068° 39.4' W]
 3. Leave Conary Ledge 'G7' to Stbd (if start, Brg 221T) [44° 14.3' N / 068° 35.2' W]
 4. Leave Channel Rock 'G5' to Stbd (if start, Brg 225T) [44° 12.8' N / 068° 32.8' W]
 5. Leave Egg Rock to starboard [44° 11.2' N / 068° 30.5' W]
 6. Leave Hanus Ledge 'HL' to starboard (If finish Brg: 266T) [44° 09.8' N / 068° 30.4' W]
 7. Leave Shabby Island to starboard [44° 09.9' N / 068° 33.6' W]
 8. Finish at Whaleback Ledge 'G1' – leave to port (Brg 213T) [44° 11.3' N / 068° 36.4' W]
- Approximate distance: 19.1 Nmi Time Limit 6 hr (unless shortened)



Race 3 (8/3/2025) – Billing's Cove to Somes Sound

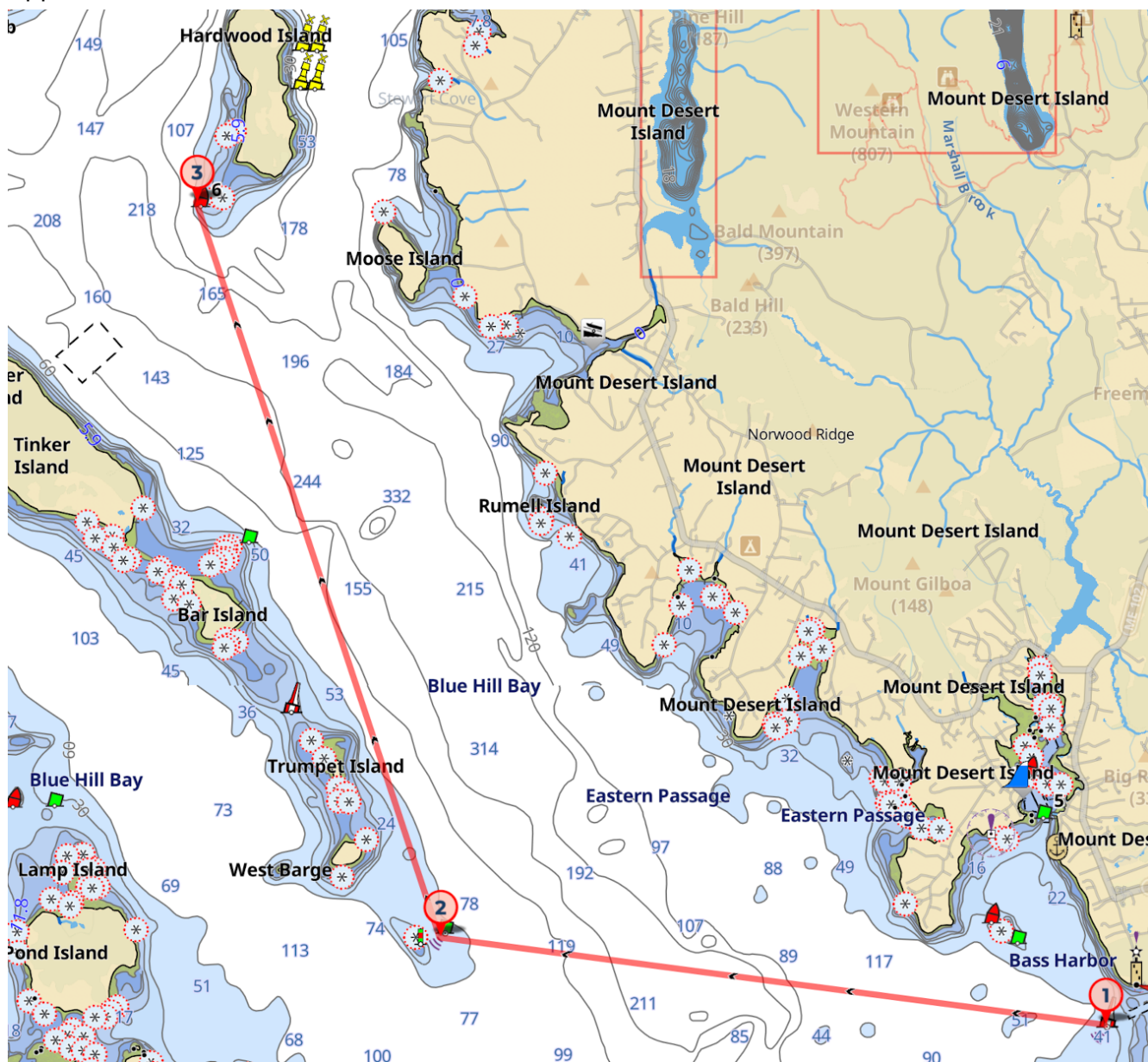
1. Start at Whaleback Ledge G1 – leave to Stbd (Brg 216T) [44° 11.3' N / 068° 36.4' W]
 2. Leave Hat Island Ledge 'R4' to port (If Start Brg 030T) [44° 08.4' N / 068° 30.9' W]
 3. Leave Johns Island Ledge 'J' to port (If Start Brg 000T) [44° 05.7' N / 068° 24.5' W]
 4. Leave Long Island to port [44° 06.0' N / 068° 19.9' W]
 5. Leave Drums Junction bell 'D' to port (If Finish Brg 291T) [44° 08.5' N / 068° 18.5' W]
 6. Leave Flynn's Ledge 'G5' to port (If Finish, Brng 280T) [44° 14.5' N / 068° 17.0' W]
 7. Leave Spurling Pt gong 'R8' to port (If Finish, Brg 276T) [44° 15.8' N / 068° 16.8' W]
 8. Finish at Greening Island 'R8' – leave to Stbd (Brg 031T) [44° 16.5' N / 068° 18.4' W]
- Approximate distance: 25.0 Nmi Time Limit 8 hr (unless shortened)



Race 4 -Somes Sound to Pretty Marsh Harbor

1. Start at Bass Harbor Head RW Gong Buoy 'WB' –Leave to Stbd (Brg 008T) [44° 13.1' N / 068° 20.5' W]
2. Leave Ship and Barges bell Buoy 'G3' to Stbd [44° 16.5' N / 068° 13.1]
3. Finish at Hardwood Island buoy 'R6' to Stbd (Brng 072T) [44° 17.7' N / 068° 27.6' W]

Approximate distance: 8.1 Nmi Time Limit 3 hr



Race 5 (8/5/2025) – Pretty Marsh Harbor to Swans Island (Two Options)

Primary: Burnt Coal Harbor

1. Start at Hardwood Island buoy 'R6' to Port (Brng 078T) [44° 17.7' N / 068° 27.6' W]
 2. Leave Trumpet Island Bar Buoy 'TI' to Stbd [44° 14.9' N / 068° 26.9' W]
 3. Leave Pond Island Passage 'G1' to Port [44° 14.3' N / 068° 28.7' W]
 4. Leave Sunken Egg Rock 'G1' to Port (If finish, record time at 112T)[44° 10.8' N / 068° 30.8' W]
 5. Leave the Woodbury 'R6' to Port [44° 09.4' N / 068° 31.5' W]
 6. Leave Hat Island Ledge 'R4' to Port [44° 08.4' N / 068° 30.9' W]
 7. Finish at Sheriff Ledges Buoy 'R2' – leave to Port (Brg 021T) [44° 07.8' N / 068° 28.6' W]
- Approximate distance: 12.6 Nmi (Shortened: 8.2 nmi) Time Limit 4 hr /Shortened 3 hr

Alternate: Mackerel Cove

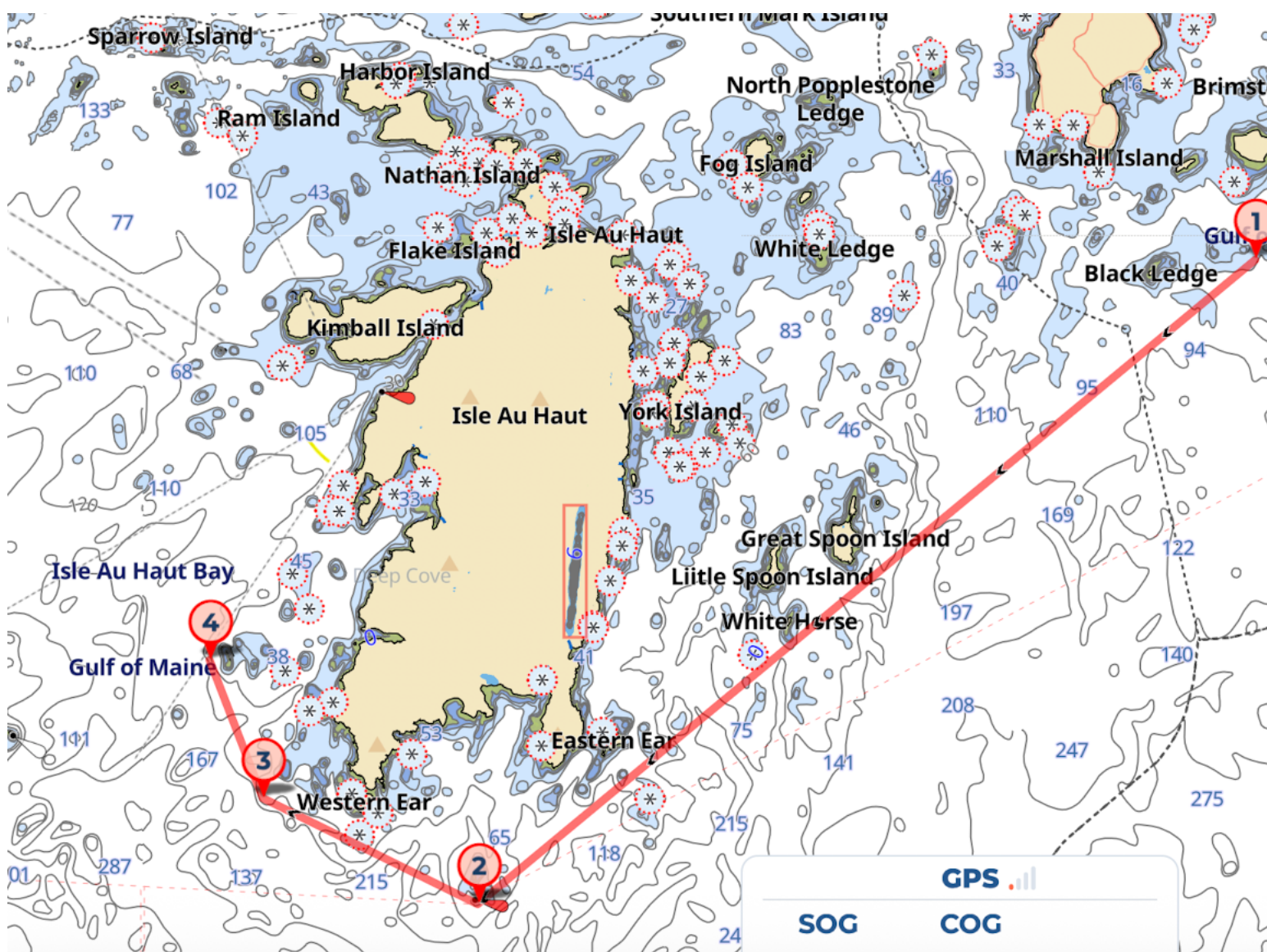
1. Start at Hardwood Island buoy 'R6' to Port (Brng 078T) [44° 17.7' N / 068° 27.6' W]
 2. Leave Trumpet Island Bar Buoy 'TI' to Stbd [44° 14.9' N / 068° 26.9' W]
 3. Leave Pond Island Passage 'G1' to Port [44° 14.3' N / 068° 28.7' W]
 4. Finish at Sheriff Ledges Buoy 'R2' – leave to Stbd (Brg 220T) [44° 07.8' N / 068° 28.6' W]
- Approximate distance: 9.1 Nmi Time Limit 3 hr



Race 6 (8/6/2025) – Swan Island to Vinalhaven

1. Start at Seal Ledge Buoy 'G1' to Stbd (Brg 320T) [44° 06.3' N / 068° 23.0' W]
2. Leave Roaring Bull bell 'R2' to Stbd [43° 59.4' N / 068° 37.9' W]
3. Leave The Washers 'R2' to Stbd [44° 00.3' N / 068° 40.5' W]
4. End at The Brandies 'R4' to Stbd (Brg 069T) [44° 01.1' N / 068° 52.8' W]

Approximate distance: 12.3 Nmi, Time Limit 4 hr (unless shortened)



Race 7 (8/8/2025) – Vinalhaven to Camden

1. Start at Fox Isles Thorofare 'R20' to Stbd (Brg 316T) [44° 07.3' N / 068° 54.5' W]
2. Leave Fox Isls Thorofare 'R26' to Stbd [44° 05.8' N / 068° 56.8' W]
3. Leave West Penobscot Bay Entrance RW 'PB' to Stbd [44° 05.9' N / 068° 00.2' W]
4. Finish at Camden Harbor Ent 'R2' to Stbd (Brg 256T) [44° 12.0' N / 069° 02.4' W]

Approximate distance: 11.2 Nmi, Time Limit 4 hr

